

# Multi-Position Tap Box

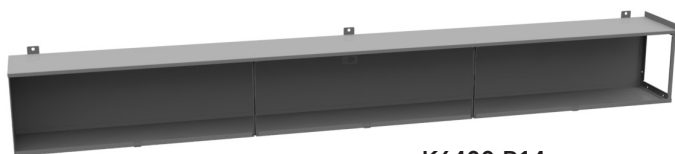
CenterPoint Approved | Wall or Pad Mountable



AP6348-O

## Tap Box Features

- Pad-lockable, 3-point latching mechanism comes standard with all units
- Easy installation
- Wall- or pad-mount installation options
- Stainless steel hardware kit included for pad-mount installation
- Lightweight aluminum NEMA 3R rated enclosure
- Aluminum powder-coat paint finish helps prevent corrosion
- Multi-port ground lugs included
- Ideal for housing developments, strip malls & apartment buildings
- Removable gutter plate on right or left side



K6400-R14

## Gutter Features

- 14 gauge G90 galvanized steel
- Three hanging/slotted brackets for wall mounting
- Three lift-off covers for easy sectional entry
- Stainless steel handles on lift-off cover

### Tap Boxes

Catalog Number	Phase	Position Lugs	Maximum Amperage	Dimensions		
				D"	W"	H"
AP6347-O	3	13	1200	24 $\frac{1}{8}$	30 $\frac{3}{4}$	43
AP6348-O	3	13	2000	29 $\frac{1}{8}$	30 $\frac{3}{4}$	48
AP6349-O	3	13	3000	29 $\frac{1}{8}$	30 $\frac{3}{4}$	48
AP6350-O	3	13	4000	29 $\frac{1}{8}$	30 $\frac{3}{4}$	48

Stainless steel pad mount spacing brackets included

### Gutter

Catalog Number	Opening	Dimensions		
		D"	W"	H"
K6401-R12*	Right	12	120	12
K6401-R14*	Right	12	120	12
K6400-L12	Left	12	120	14
K6400-L14	Left	12	120	14

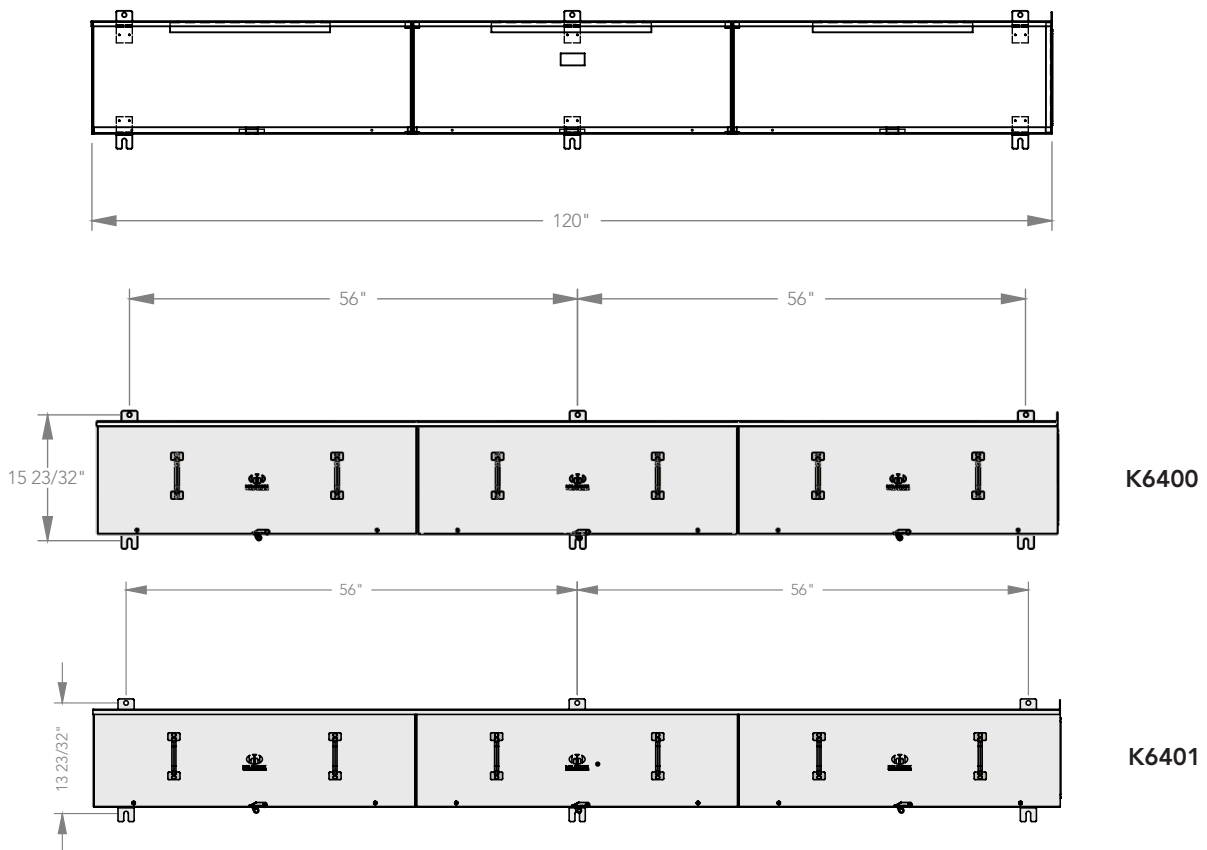
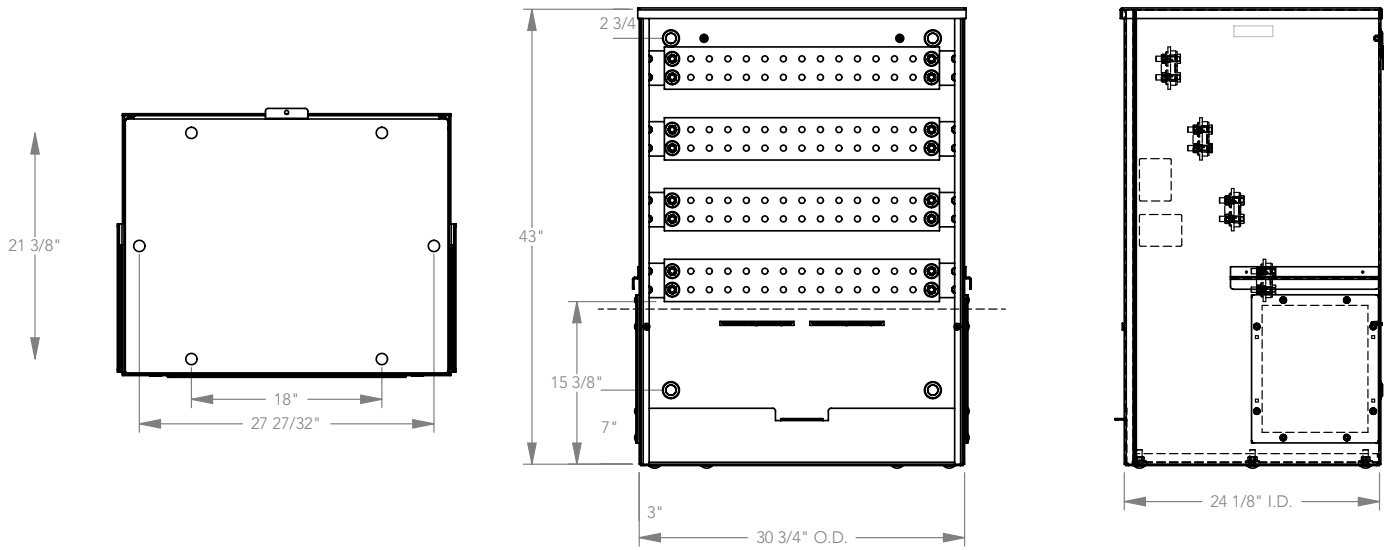
\*Includes reducing plate to fit to 14 inch opening

Installations must strictly comply with all applicable codes, industry standards, laws and regulations. Milbank reserves the right to make changes in specifications and features shown without notice or discontinue the product described at any time without notice or obligation. Utility requirements for this equipment may vary. Always consult the serving utility for their requirements prior to ordering or installing this equipment. This product must be installed by a licensed electrician. Installation of this equipment may require local electrical inspector approval.



# Multi-Position Tap Box

## Line Drawings



Installations must strictly comply with all applicable codes, industry standards, laws and regulations. Milbank reserves the right to make changes in specifications and features shown without notice or discontinue the product described at any time without notice or obligation. Utility requirements for this equipment may vary. Always consult the serving utility for their requirements prior to ordering or installing this equipment. This product must be installed by a licensed electrician. Installation of this equipment may require local electrical inspector approval.

