

MILBANK[®]
ENERGY AT WORK



New Jersey

PSE&G,
Jersey Central Power & Light Territory
Meter Mounting Equipment



Milbank Overview

Energy At Work since 1927

Milbank designs and manufactures electrical solutions that move and manage power for the residential, commercial, industrial, utility and transportation sectors. With more than 90 years of expertise in electrical engineering design and manufacturing, Milbank's portfolio includes metering equipment, enclosures and enclosed controls. Founded in 1927, Milbank is a family-owned, American manufacturer headquartered in Kansas City, Mo. For more information, please visit milbankworks.com.

METERING



As a market leader in electrical metering equipment, Milbank has set the standard for quality since 1927. Hundreds of configurations are available, including many sizes, knockout configurations, terminal configurations, bypass options, hubs, locks, and connectors. Milbank has the socket you need with thousands of active products to meet your utility's requirements.

ENCLOSURES



Milbank's line of enclosures include commercial junction boxes, panel mount enclosures, transformer cabinets, wireway, and troughs. Built with high-quality craftsmanship and materials that meet or exceed industry standards, Milbank enclosures are made to protect controls and equipment from dust, dirt, and other harmful elements found in a wide variety of environments based on various NEMA ratings Milbank offers.

ENCLOSED CONTROLS



Milbank doesn't just build empty enclosures. We can deliver the entire package, complete with custom control equipment built to your exact specifications by our engineers. Milbank enclosed controls are an attractive, secure, easy-to-install and cost-effective solution when underground remote site power distribution and control equipment is required, replacing unsightly and inefficient strut and backboard structures.



Please consult serving utility for their requirements prior to ordering or installing, as specifications and approvals vary by utility, and may require local electrical inspector approval. All installations must be installed by a licensed electrician and must comply with all national and local codes, laws and regulations. Milbank reserves the right to make changes in specifications and features shown without notice or obligation.

Air Conditioner Disconnects

30 & 60 Amps AC disconnects	5
60 Amps AC disconnect with 20 Amps GFCI receptacle	6
Hot tub disconnects	7

Single Position Sockets

125 Amps, 4 & 5 terminals	8
200 Amps, 4 & 5 terminals	9

Single Position with Lever Bypass

200 Amps, 5 & 7 terminals	10
320 Amps, 4, 5 & 7 terminals	11

Meter Mains

100-200 Amps, 4 terminals	12
100-200 Amps, 4 terminals, with load center	13

Multi-Position Sockets

100 Amps, 4 & 5 terminals, horizontal gangs, ringless	14-15
200 Amps, 4 terminals, horizontal gangs, ringless	16-17

Transformer Cabinet

800 Amps.....	18
---------------	----

Meter Main with Load Center Pedestal

100-200 Amps, 4 terminals, ringless	20
---	----

Miscellaneous

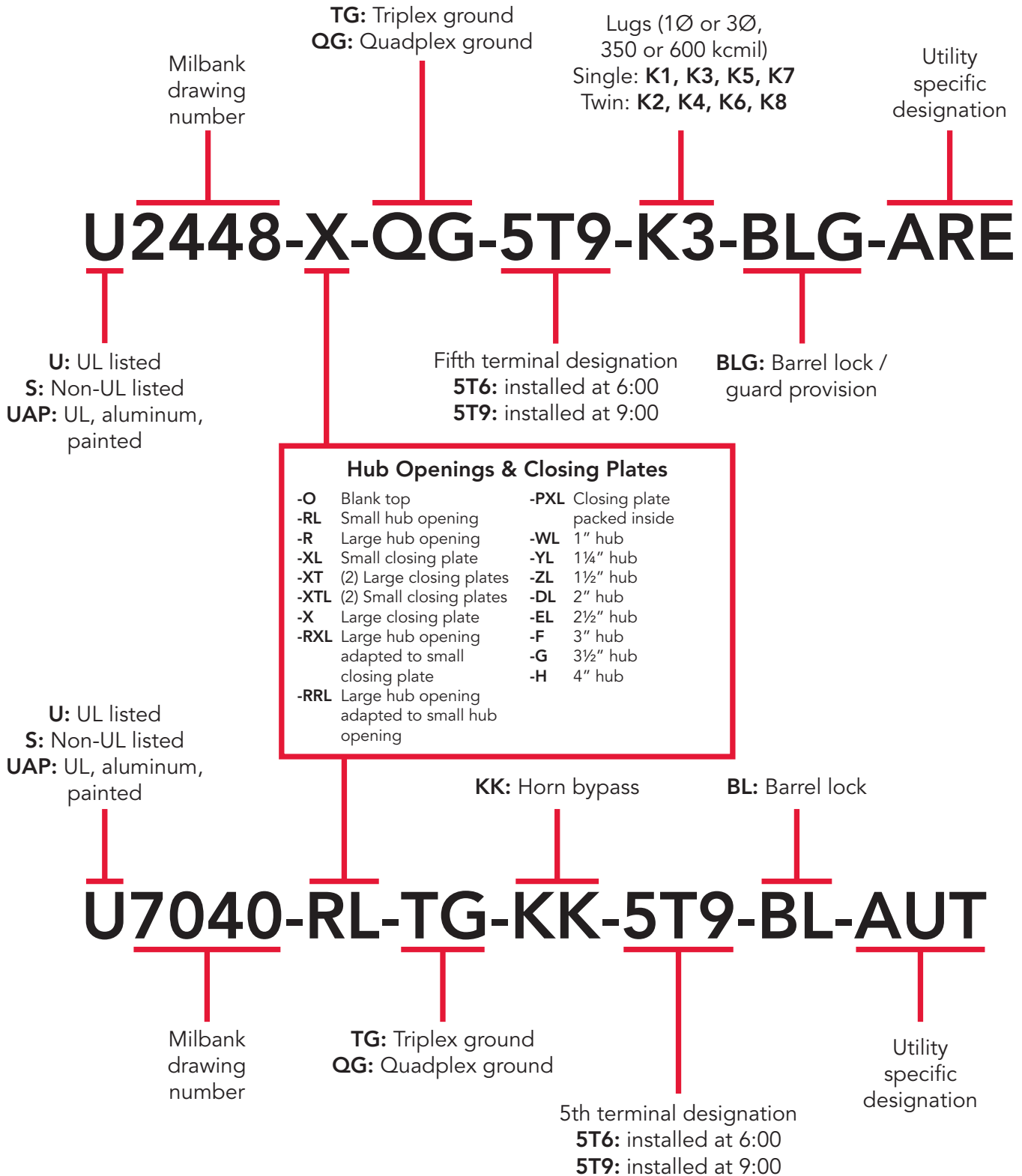
Enclosed controls	21-26
Circuit breakers	27
Accessories	28-30
Reference information	31-34
Index.....	35

Please consult serving utility for their requirements prior to ordering or installing, as specifications and approvals vary by utility, and may require local electrical inspector approval. All installations must be installed by a licensed electrician and must comply with all national and local codes, laws and regulations. Milbank reserves the right to make changes in specifications and features shown without notice or obligation.



Catalog Number Logic

How our Product Catalog Numbers are Derived



Please consult serving utility for their requirements prior to ordering or installing, as specifications and approvals vary by utility, and may require local electrical inspector approval. All installations must be installed by a licensed electrician and must comply with all national and local codes, laws and regulations. Milbank reserves the right to make changes in specifications and features shown without notice or obligation.

Air Conditioner Disconnects

30-60 Amps | Fusible & Non-Fusible



U3802



U3812



U3832

Milbank's air conditioner disconnect has a removable hinged cover that makes wiring a breeze. Our compact design meets NEC wiring space requirements and also complies with NEC article 440-14. For safe working conditions, our disconnect pullers may be removed and reinstalled in the OFF position. Additionally, padlock provisions are included on the front cover. As with other Milbank products, our enclosure is constructed of G90 galvanized steel and electrostatically finished with an attractive, light gray, baked powder coating. Our epoxy/polyester resin blend offers a finish that is both durable and fade-resistant.

30-60 Amps | Air Conditioner Disconnects | 1Ø, 240 VAC

Catalog Number	Amps	Type	Max H.P.	Weight (lbs.)	Line/Load Wire Range		Ground Wire Range CU/AL	Wire Rating		Dimensions		
					CU	AL		CU °C	AL °C	D"	W"	H"
U3802	60	Non-Fusible	10	3.25	#14-#2	#12-#2	#14-4	60°/75°	60°/75°	2½	5	7½
U3812	60	Non-Auto	10	3.25	#14-#2	#12-#2	#14-4	60°/75°	60°/75°	2½	5	7½
U3832	30	Fusible	3	2.5	#14-#3	#14-#3	#14-3	60°/75°	60°/75°	2⅞	5	7
U3862	60	Fusible	10	3.3	#14-#3	#14-#3	#14-3	60°/75°	60°/75°	2⅞	5	9

Notes

- UL listed as Enclosed Pullout Switch
- NEMA 3R weather-resistant enclosure
- 1-inch concentric knockouts

Please consult serving utility for their requirements prior to ordering or installing, as specifications and approvals vary by utility, and may require local electrical inspector approval. All installations must be installed by a licensed electrician and must comply with all national and local codes, laws and regulations. Milbank reserves the right to make changes in specifications and features shown without notice or obligation.



Air Conditioner Disconnects

60 Amps GFCI Receptacle



U3822-20GWR

Specifications

- Meets NEC #210.63 requirements
- Meets NEC #406.8 requirements
- UL listed as Power Outlet
- NEMA 3R enclosure
- In-use cover*
- Duplex ground connector
- 1-inch concentric knockouts
- 1Ø, 240 VAC
- 60 Amps, non-fused
- 20 Amps GFCI receptacle
- Reset/test button
- Weather and tamper resistant

60 Amps | Air Conditioner Disconnect with GFCI Receptacle | 1Ø, 240 VAC

Catalog Number	Type	Max H.P.	Weight (lbs.)	Line/Load Wire Range		Ground Wire Range CU/AL	Wire Rating		Dimensions		
				CU	AL		CU	AL	D"	W"	H"
U3822-20GWR	Non-Fusible	10	6	#14-#2	#12-#2	#14-4	60°/75°	60°/75°	4½	5¼	7⅝

Notes

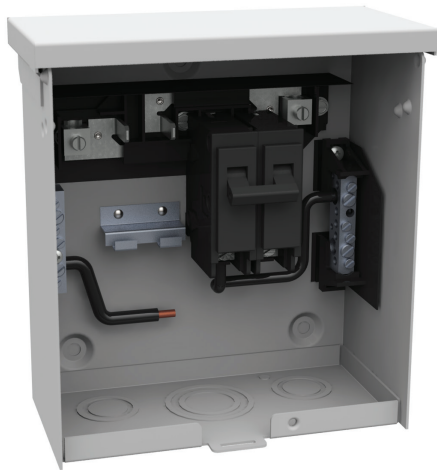
- **Disconnect pullers:** To ensure the safest conditions, Milbank disconnect pullers are reversible so they may be reinstalled in the OFF position.
 - **Padlock provision:** All units are designed with a padlock provision on the cover for security.
- *Cover is rated as an in-use cover (may be closed with cords plugged into receptacle).



Please consult serving utility for their requirements prior to ordering or installing, as specifications and approvals vary by utility, and may require local electrical inspector approval. All installations must be installed by a licensed electrician and must comply with all national and local codes, laws and regulations. Milbank reserves the right to make changes in specifications and features shown without notice or obligation.

Hot Tub Disconnects

NEMA 3R Enclosures



U4881-O-50GB



U4881-O-60GB

Specifications

- 240 VAC ground fault protection
- UL listed, NEMA 3R weather-resistant
- 2-pole, 50 Amps GFCI breaker protection
- Compact size
- Three or four wire installation
- 1Ø, 120/240 VAC
- Standard package of 12
- Two extra 1-pole breaker spaces
- 100 Amps overall rating
- Easy to install

100 Amps | Hot Tub Disconnect or Sub Panel Breaker Enclosure

Catalog Number	Breaker Amps	Type	Weight (lbs.)	Line/Load Wire Range		Ground Wire Range CU/AL	Dimensions		
				CU	AL		D"	W"	H"
U4881-O	—	Breaker Provision	7	#14-1/0	#14-1/0	#14-1/0	3¾	7½	8½
U4881-O-50GB	50	Breaker	8	#14-1/0	#14-1/0	#14-1/0	3¾	7½	8½
U4881-O-60GB	60	Breaker	8	#14-1/0	#14-1/0	#14-1/0	3¾	7½	8½

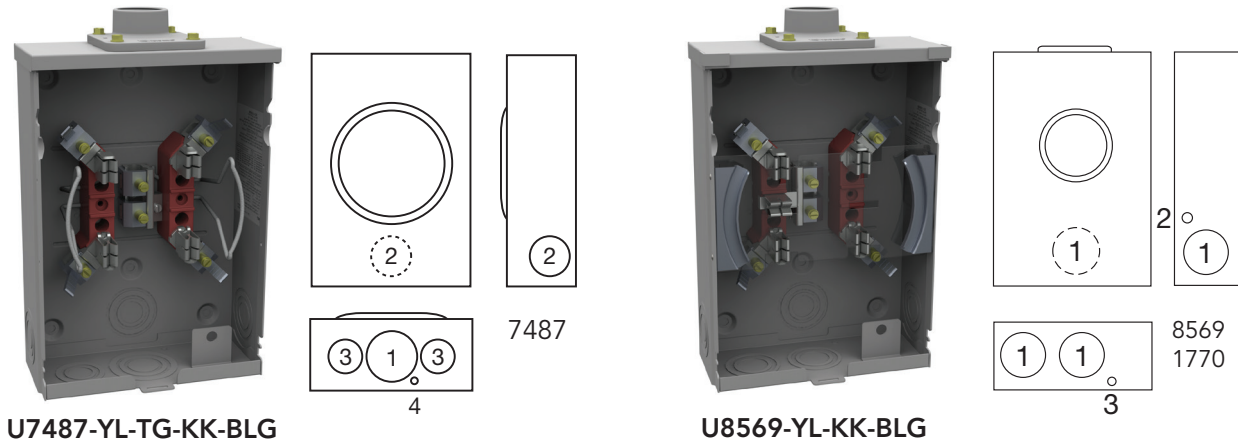
Please consult serving utility for their requirements prior to ordering or installing, as specifications and approvals vary by utility, and may require local electrical inspector approval. All installations must be installed by a licensed electrician and must comply with all national and local codes, laws and regulations. Milbank reserves the right to make changes in specifications and features shown without notice or obligation.



8

Single Position Sockets

125 Amps | 4 & 5 Terminals | Ringless | 600 VAC



125 Amps | Horn Bypass | Overhead | 600 VAC

Catalog Number	Terminals	Utility Approval	Hub	Connectors CU/AL		Dimensions			Knockouts			
				Line	Load	D"	W"	H"	1	2	3	4
U7487-YL-TG-KK-BLG	4	JCP&L	1¼	#6-2/0	#6-2/0	3⅝	8	11½	2	1½	1¼	¼
U7487-RL-TG-KK-BLG	4	JCP&L	H.O.	#6-2/0	#6-2/0	3⅝	8	11½	2	1½	1¼	¼
U8569-YL-KK-BLG	5	PSE&G	1¼	#6-2/0	#6-2/0	3⅝	8	11½	1½	7/16	¼	—

Notes

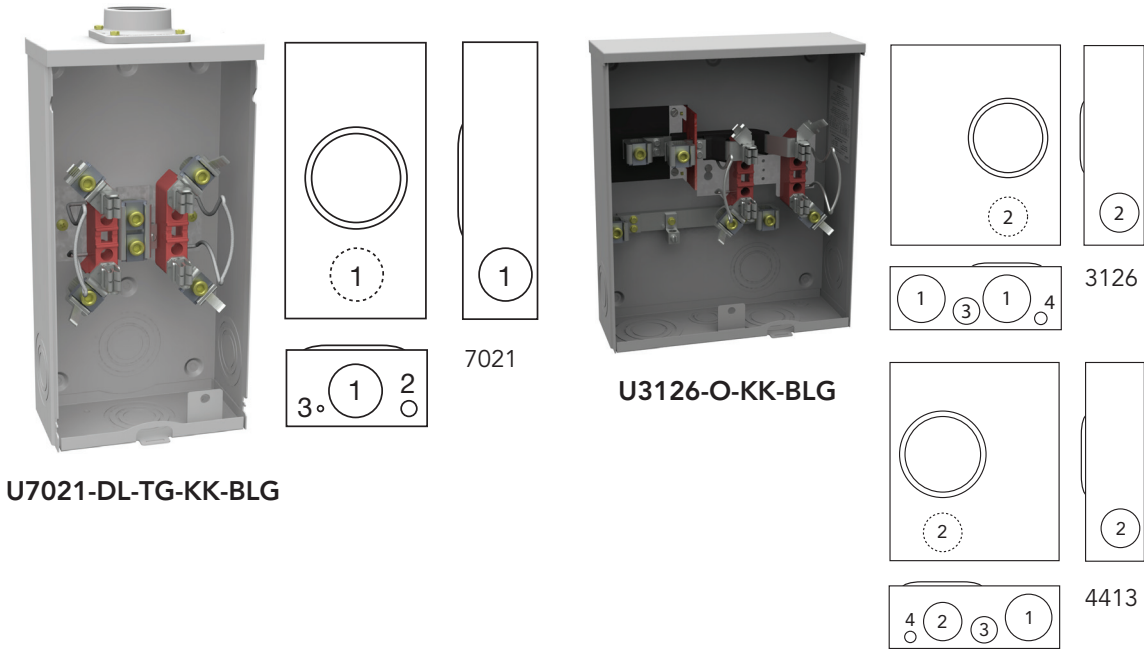
- **Connectors:** Extruded aluminum connectors are tin plated. Units are supplied with duplex neutral and ground.
- **Fifth terminal:** For field-installable fifth terminal for the **U7487**, order catalog number **5T8K2**.



Please consult serving utility for their requirements prior to ordering or installing, as specifications and approvals vary by utility, and may require local electrical inspector approval. All installations must be installed by a licensed electrician and must comply with all national and local codes, laws and regulations. Milbank reserves the right to make changes in specifications and features shown without notice or obligation.

Single Position Sockets

200 Amps | 4 & 5 Terminals | Ringless | 600 VAC



200 Amps | 4 Terminals | Horn Bypass

Catalog Number	Utility Approval	Service	Hub	Connectors CU/AL		Dimensions			Knockouts			
				Line & Load		D"	W"	H"	1	2	3	4
U7021-DL-TG-KK-BLG	JCP&L	OH	2"	#6-350		4 1/8	8	15 1/2	2 1/2	1/2	1/4	-

200 Amps | 5 Terminals | Horn Bypass

Catalog Number	Utility Approval	Service	Hub	Connectors CU/AL		Dimensions			Knockouts			
				Line & Load		D"	W"	H"	1	2	3	4
U8173-XL-KK-BLG	PSE&G	OH/UG	C.P.	#6-350		4 1/8	11	15 1/2	2 1/2	1/2, 1/4	1/4	-

200 Amps | 4 Terminals | Side Wireway | Horn Bypass

Catalog Number	Utility Approval	Service	Hub	Connectors CU/AL		Dimensions			Knockouts			
				Line	Load	D"	W"	H"	1	2	3	4
U3126-O-KK-BLG	JCP&L	UG	Blank	#6-350	#6-350	4 1/2	13	15 1/4	3	-	-	-
U4413-O-KK-BLG	JCP&L	UG	Blank	#6-350	#6-350	4 1/2	13	15 1/4	3	2 1/2	1 1/2	1/2

Notes

- **Hubs:** For proper hub selection, see the hub suffix chart on the accessories page.
- **Connectors:** Extruded aluminum connectors are tin plated. Units are supplied with duplex neutral.
- **Fifth terminal:** For field-installable fifth terminal for the **U7021**, **U3126** and **U4413**, order catalog number **K5T**.

Please consult serving utility for their requirements prior to ordering or installing, as specifications and approvals vary by utility, and may require local electrical inspector approval. All installations must be installed by a licensed electrician and must comply with all national and local codes, laws and regulations. Milbank reserves the right to make changes in specifications and features shown without notice or obligation.



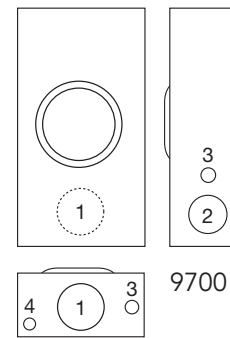
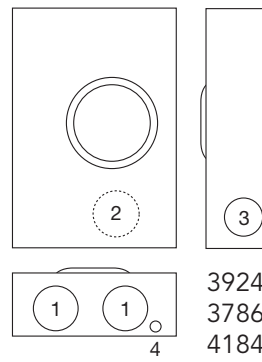
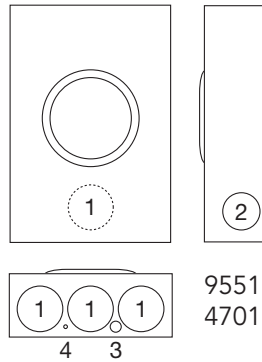
1 □

Single Position Sockets

200 Amps | 5 & 7 Terminals | Lever Bypass | Ringless | 600 VAC



U4701-XL-BLG



200 Amps | 5 Terminals | Heavy Duty Lever Bypass | Jaw Clamping | Ringless | 1Ø3W

Catalog Number	Utility Approval	Service	Hub	Connectors CU/AL		Dimensions			Knockouts			
				Line	Load	D"	W"	H"	1	2	3	4
U9551-R-5T9	JCP&L	OH	H.O.	#6-350	#6-350	4 ⁷ / ₈	10	18 ¹ / ₂	3	2 ¹ / ₂	1/2	1/4
U3924-XL*	JCP&L	UG	C.P.	#6-350	#6-350	4 ⁷ / ₈	14	20 ¹ / ₂	3	2 ¹ / ₂	1/2	—

200 Amps | 7 Terminals | Medium Duty | Lever Bypass | Ringless | 3Ø4W | 600 VAC

Catalog Number	Utility Approval	Service	Hub	Connectors CU/AL	Dimensions			Knockouts			
					D"	W"	H"	1	2	3	4
U3786-O-BLG	JCP&L	UG	Blank	#6-350 kcmil	6	18	19 ¹ / ₄	4	3	2 ¹ / ₂	1/2

200 Amps | 7 Terminals | Heavy Duty Lever Bypass | Jaw Clamping | Ringless | 3Ø4W

Catalog Number	Utility Approval	Service	Hub	Connectors CU/AL	Dimensions			Knockouts			
				Line & Load	D"	W"	H"	1	2	3	4
U9700-RRL-BLG	JCP&L	OH	H.O.	#6-350	4 ²⁷ / ₃₂	10	18 ¹ / ₂	3	2 ¹ / ₂	3/4	1/2
U4701-XL-BLG	PSE&G	OH/UG	C.P.	#6-350	4 ²⁷ / ₃₂	13	19	3	2 ¹ / ₂	1/2	1/4
U4184-O	JCP&L	Blank	Blank	#6-350	4 ²⁷ / ₃₂	13	19	4	—	4	1/2

Notes

- **Hubs:** For proper hub selection, see the hub suffix chart on the accessories page.
 - **Connectors:** Unit supplied with tin-plated aluminum connectors.
 - **Bypass:** Lever supplies clamping action on meter spades and also operates bypass device on the **U9551**, **U4701** and the **U9700**.
 - **Medium duty bypass:** On the **U3786** units, the lever operates sliding bypass only and is NOT jaw clamping.
- *The **U3924** requires a **K3865** fifth terminal for approval.

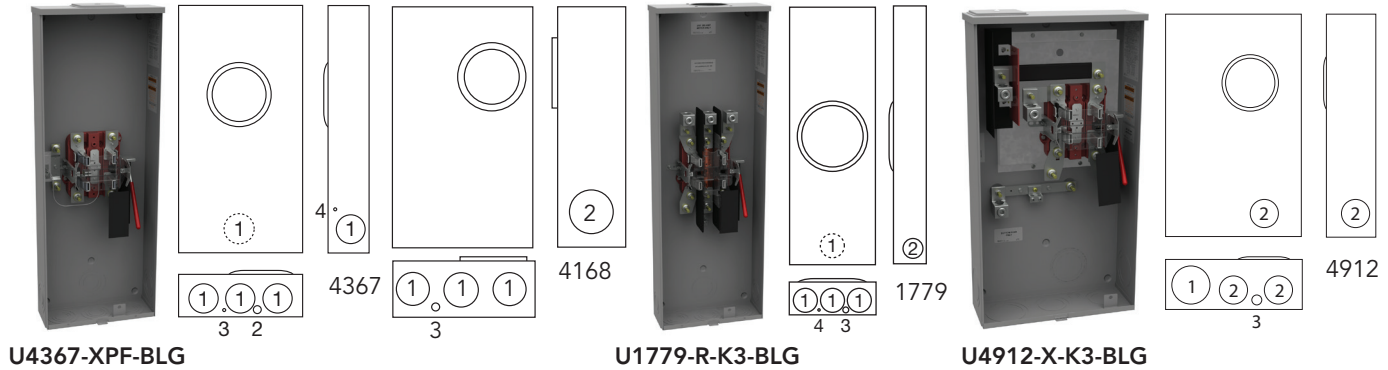


Please consult serving utility for their requirements prior to ordering or installing, as specifications and approvals vary by utility, and may require local electrical inspector approval. All installations must be installed by a licensed electrician and must comply with all national and local codes, laws and regulations. Milbank reserves the right to make changes in specifications and features shown without notice or obligation.

Lever Bypass Single Position Sockets

1 1

320 Amps | 4, 5 & 7 Terminals | Ringless | 600 VAC



320 Amps | 5 Terminals | Lever Bypass | Ringless | 600 VAC

Catalog Number	Utility Approval	Service	Term	Hub	Connectors CU/AL		Dimensions			Knockouts			
					Line	Load	D"	W"	H"	1	2	3	4
U4367-XPF-BLG	PSE&G	OH	5	C.P.	3/8"-16 Studs	3/8"-16 Studs	4 ²⁷ / ₃₂	13	35 ¹ / ₄	3	1/2	1/4	7/16

320 Amps | 4 Terminals | Lever Bypass | Ringless | 600 VAC

Catalog Number	Utility Approval	Service	Term	Hub	Connectors CU/AL		Dimensions			Knockouts			
					Line	Load	D"	W"	H"	1	2	3	4
U1779-R-K3-BLG	JCP&L	OH	4	-	#4-600	3/8"-16 Studs	13	3	38 ³ / ₄	2 ¹ / ₂	1/2	1/4	7/16
U4912-X-K3-BLG	JCP&L	UG	4	C.P.	#4-600	3/8"-16 Studs	5 ³ / ₄	16	30	4	4 ¹ / ₂	1	-

320 Amps | 7 Terminals | Side Wireway | Lever Bypass | Ringless | 600 VAC

Catalog Number	Utility Approval	Service	Term	Hub	Connectors CU/AL		Dimensions			Knockouts		
					Line	Load	D"	W"	H"	1	2	3
U4168-X-K7-BLG	JCP&L	OH/UG	7	C.P.	#4-600	3/8"-16 Studs	6 ¹ / ₂	19	34 ¹ / ₈	4	3	1/2

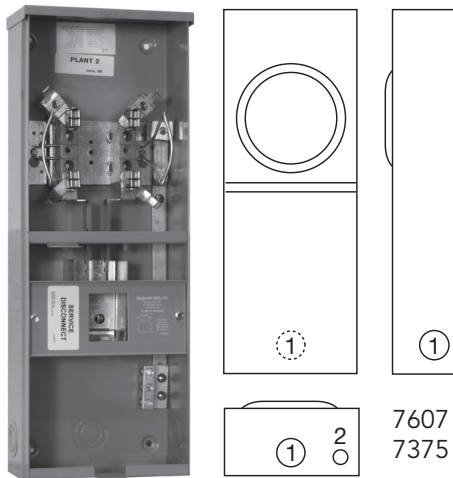
Notes

- **Hubs:** For proper hub selection, see the hub suffix chart on the accessories page.
- **Connectors:** Stud type units supplied with 3/8"-16 hex head nuts with Belleville washers. For connector kits (4 & 5 terminal sockets), order as extra: **K1539** (single 350 kcmil) or **K1540** (single 600 kcmil). For twin lug connectors order as extra: **K1350** (twin 350 kcmil). For 3Ø **U4168**, order as extra **K3082** (single 350 kcmil), **K3442** (twin 350 kcmil) or **K3441** (single 500 kcmil).
- **Fifth terminal:** For field-installable fifth terminal for the **U4912** and **U1779**, order **K3865**.
- **Bypass:** Lever supplies clamping action on meter spades and also operates bypass device.

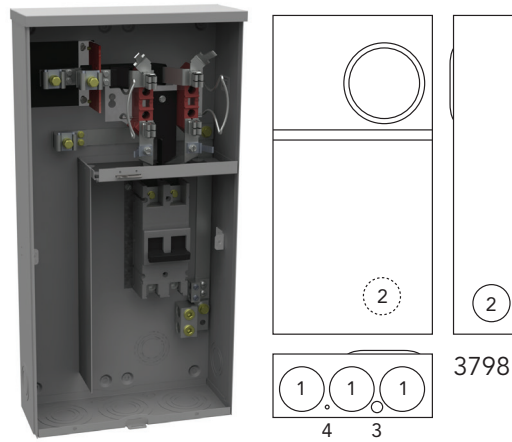
Please consult serving utility for their requirements prior to ordering or installing, as specifications and approvals vary by utility, and may require local electrical inspector approval. All installations must be installed by a licensed electrician and must comply with all national and local codes, laws and regulations. Milbank reserves the right to make changes in specifications and features shown without notice or obligation.



100-200 Amps | 4 Terminals | Ringless | 1Ø | 600 VAC



U7375-RL-KK



U3798-O-200-KK

100 Amps | 4 Terminals | Horn Bypass | Ringless | 1Ø3W | 600 VAC

Catalog Number	Approved By	Service	Hub	Connectors CU/AL		Dimensions			Knockouts	
				Line	Load	D"	W"	H"	1	2
U7375-RL-KK	JCP&L	OH	H.O.	#6-2/0	C.B.	3¾	8⅞	22	1¼	½

200 Amps | 4 Terminals | Horn Bypass | Ringless | 1Ø3W | 600 VAC

Catalog Number	Approved By	Service	Hub	Connectors CU/AL		Dimensions			Knockouts			
				Line	Load	D"	W"	H"	1	2	3	4
U7607-RL-200-KK-CECHA	JCP&L	OH	H.O.	#6-350	1/0-300	4½	8⅞	29	2	½	—	—
U3798-O-200-KK	JCP&L	UG	Blank	#6-350	1/0-300	4⅞	13	25⅞	3	2½	½	¼

Notes

- **Hubs:** For proper hub selection, see the hub suffix chart on the accessories page.
- **Connectors:** Extruded aluminum connectors are tin plated.
- **Breakers:** Factory installed in the 200 Amps units.
- **Bypass:** Comes factory installed with horn type bypass.
- **Fifth terminal:** Add **5T8K2** as fifth terminal kit for **U7375**, and add **K5T** for **U3798** and **U7607**.

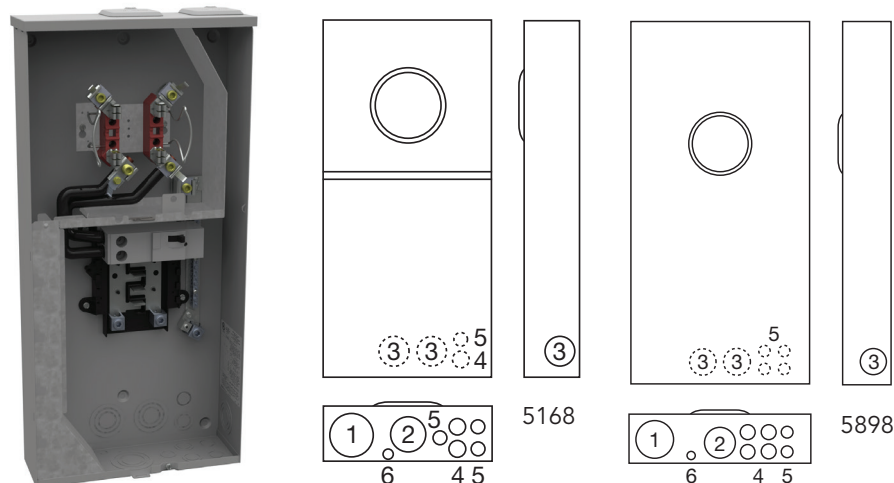


Please consult serving utility for their requirements prior to ordering or installing, as specifications and approvals vary by utility, and may require local electrical inspector approval. All installations must be installed by a licensed electrician and must comply with all national and local codes, laws and regulations. Milbank reserves the right to make changes in specifications and features shown without notice or obligation.

Meter Mains with Load Center

1 3

100-200 Amps | 4 Terminals | Ringless | 120/240 VAC



U5168-XTL-100-KK-BLG

100-200 Amps | 4 Terminals | Horn Bypass | Ringless

Catalog Number	Utility Approval	Service	Amps	Bypass	Hub	Connectors		Dimensions			Knockouts					
						Line	Load	D"	W"	H"	1	2	3	4	5	6
U5168-XTL-100-KK-BLG*	JCP&L	OH	100	Horn	C.P.	#6-350 kcmil	CB	4½	14⅞	30	3	2½	2	1	¾	½
U5168-XTL-200-KK-BLG*	JCP&L	OH	200	Horn	C.P.	#6-350 kcmil	CB	4½	14⅞	30	3	2½	2	1	¾	½
U5898-O-200-KK-BLG*†	JCP&L	UG	200	Horn	Blank	#6-350 kcmil	CB	4½	17	34½	3	2½	2	1	¾	½

Notes

- **Hubs:** For proper hub selection, see the hub suffix chart on the accessories page.
- **Interior:** 5168 units have eight circuit interior.
- **Fifth terminal:** Order **K5T** and field install for 208Y/120 network systems. Installs in the 9 o'clock position only.
- **Breakers:** Rated 22K AIC with Milbank **QN2200RH** main installed.
- **Interlock kit:** For generator auxiliary circuit breaker interlock, order **K5815** for large **QN** with small frame **Q**; order **K5820** for large frame **QN** with large frame **QN**.
- **Sub-feed lugs:** #6-350 kcmil sub-feed lugs provided on eight circuit interior. **Not available on 20 circuit interior.**

*Barrel lock with guard provision (suffix **-BLG**).

†The **U5898** has side bus feed.

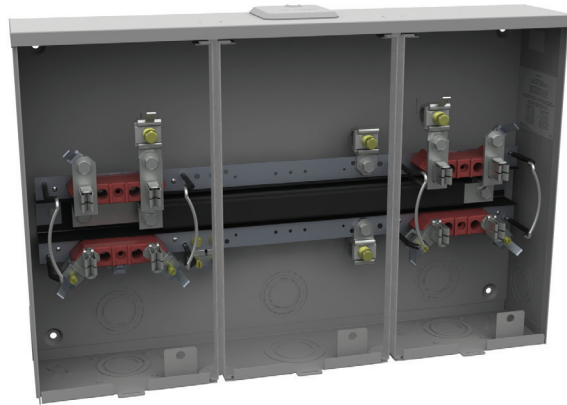
Please consult serving utility for their requirements prior to ordering or installing, as specifications and approvals vary by utility, and may require local electrical inspector approval. All installations must be installed by a licensed electrician and must comply with all national and local codes, laws and regulations. Milbank reserves the right to make changes in specifications and features shown without notice or obligation.



1 4

Multi-Position Sockets

100 Amps | 4 & 5 Terminals | Horizontal Gangs | Ringless | 300 VAC



U8032-XL-KK-BLG

100 Amps | 4 Terminals | Center Wireway | Horn Bypass | Ringless | OH/UG | 1Ø3W

Catalog Number	Utility Approval	No. of Positions	Hub	Connectors		Dimensions			Knockouts		
				Line	Load	D"	W"	H"	1	2	3
U8032-XL-KK-BLG*	JCP&L	2	C.P.	6-350 kcmil	#6-2/0	4½	24½	16	2½	2	½
U8033-XL-KK-BLG*	JCP&L	3	C.P.	6-350 kcmil	#6-2/0	4½	36 ¹¹ / ₁₆	16	2½	2	½
U8034-XL-KK-BLG*	JCP&L	4	C.P.	6-350 kcmil	#6-2/0	4½	40 ⁷ / ₈	16	2½	2	½
U8035-XL-KK-BLG*	JCP&L	5	C.P.	6-350 kcmil	#6-2/0	4½	49 ¹ / ₁₆	16	2½	2	½
U8036-XL-KK-BLG*	JCP&L	6	C.P.	6-350 kcmil	#6-2/0	4½	57¼	16	2½	2	½

100 Amps | 5 Terminals | Center Wireway | Horn Bypass | Ringless | OH/UG | 1Ø3W

Catalog Number	Utility Approval	No. of Positions	Hub	Connectors		Dimensions			Knockouts				
				Line	Load	D"	W"	H"	1	2	3	4	5
U1282-XL-KK-BLG*	PSE&G	2	C.P.	6-350 kcmil	#6-2/0	4½	24½	14	2½	1½	½	⅞	⅝
U1283-XL-KK-BLG*	PSE&G	3	C.P.	6-350 kcmil	#6-2/0	4½	32 ⁵ / ₈	14	2½	1½	½	⅞	—
U1284-XL-KK-BLG*	PSE&G	4	C.P.	6-350 kcmil	#6-2/0	4½	40 ⁷ / ₈	14	2½	1½	½	—	—

Notes

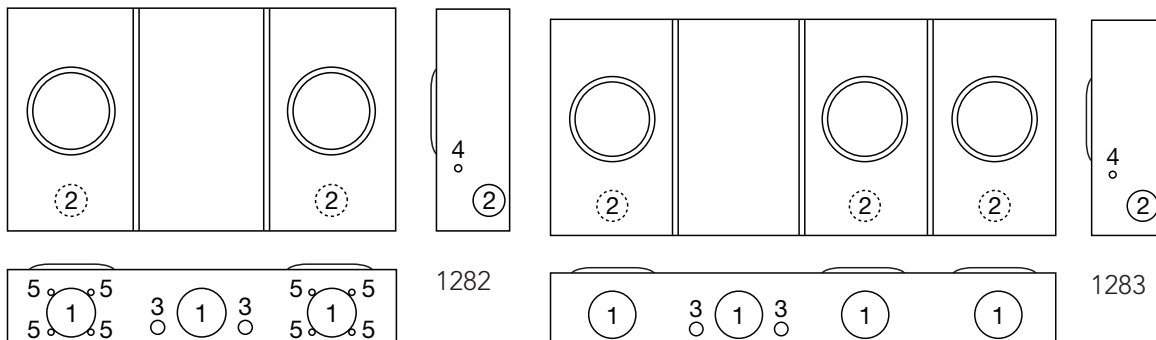
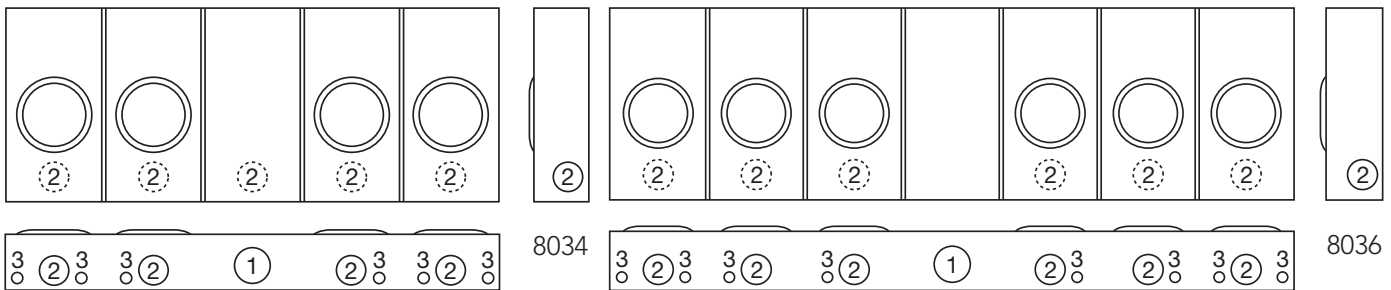
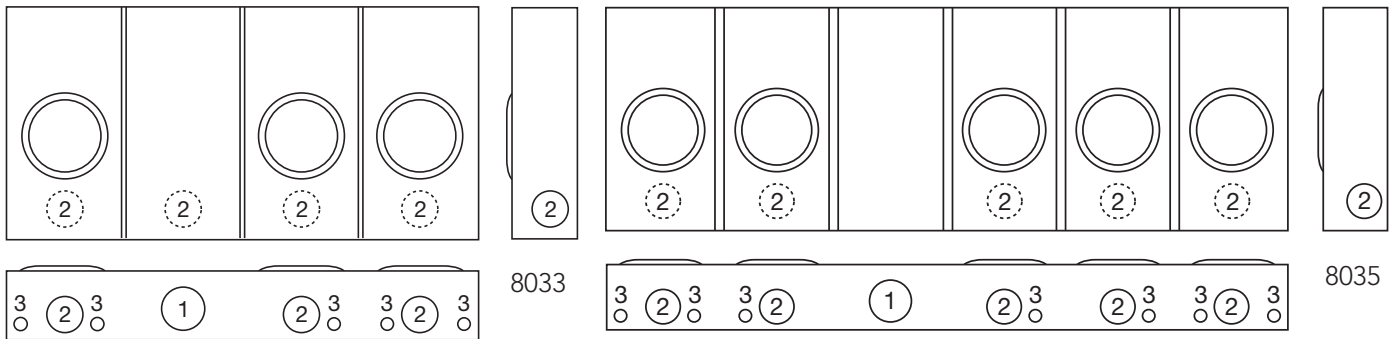
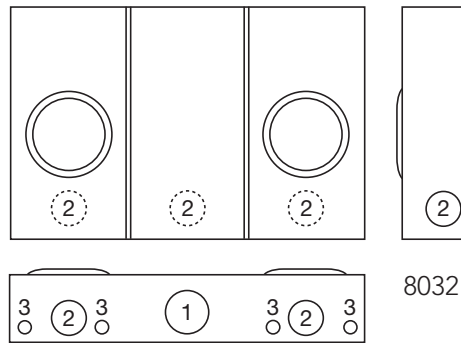
- **Hubs:** For proper hub selection, see the hub suffix chart on the accessories page.
 - **Fifth terminal:** For **U8032-U8036** equipment only: field-installable fifth terminal, order catalog number **5T8K2** for each meter position, six o'clock position only. Order catalog number **K9959** for each meter position, nine o'clock position only.
 - **Connectors:** Extruded aluminum connectors are tin plated.
 - **Bussing:** Bussing is ⅝" X 1" aluminum.
 - **Bypass:** Units provided with horn type bypass (suffix **-KK**).
 - **Additional positions:** **U8032** and **U8033** require approval from utility for 5-6 gang socket.
- *Barrel lock with guard provision (suffix **-BLG**).



Please consult serving utility for their requirements prior to ordering or installing, as specifications and approvals vary by utility, and may require local electrical inspector approval. All installations must be installed by a licensed electrician and must comply with all national and local codes, laws and regulations. Milbank reserves the right to make changes in specifications and features shown without notice or obligation.

U8032-U8036 Series

Knockout Information



Please consult serving utility for their requirements prior to ordering or installing, as specifications and approvals vary by utility, and may require local electrical inspector approval. All installations must be installed by a licensed electrician and must comply with all national and local codes, laws and regulations. Milbank reserves the right to make changes in specifications and features shown without notice or obligation.



200 Amps | 4 Terminals | Horizontal Gangs | Ringless | 300 VAC



U1252-X-KK-K3-BLG

200 Amps | 4 Terminals | Center Wireway | Horn Bypass | Ringless | OH/UG | 1Ø3W

Catalog Number	Utility Approval	No. of Positions	Hub	Connectors		Dimensions		
				Line	Load	D"	W"	H"
U1252-X-KK-K3-BLG*	JCP&L	2	C.P.	#4-600 kcmil or (2) 1/0-250 kcmil	#6-350 kcmil	5 $\frac{1}{8}$ "	26 $\frac{1}{2}$ "	14"
U1253-X-KK-K3-BLG*	JCP&L	3	C.P.	#4-600 kcmil or (2) 1/0-250 kcmil	#6-350 kcmil	5 $\frac{1}{8}$ "	34 $\frac{1}{16}$ "	14"
U1254-X-KK-K3-BLG*	JCP&L	4	C.P.	#4-600 kcmil or (2) 1/0-250 kcmil	#6-350 kcmil	5 $\frac{1}{8}$ "	42 $\frac{7}{8}$ "	16"
U1255-X-KK-K3-BLG*	JCP&L	5	C.P.	#4-600 kcmil or (2) 1/0-250 kcmil	#6-350 kcmil	5 $\frac{1}{8}$ "	54 $\frac{7}{8}$ "	16"
U1256-X-KK-K3-BLG*	JCP&L	6	C.P.	#4-600 kcmil or (2) 1/0-250 kcmil	#6-350 kcmil	5 $\frac{1}{8}$ "	63 $\frac{1}{16}$ "	16"

Notes

- **Hub:** For proper hub selection, refer to the hub suffix chart on the accessories page.
- **Fifth terminal:** For field-installable fifth terminal, order catalog number **K5T** for each meter position, 9 o'clock position only.
- **Connectors:** Extruded aluminum connectors are tin plated.
- **Bypass:** Units provided with horn type bypass (suffix **-KK**).
- **Bussing:** Bussing is $\frac{5}{16}$ " x 1" aluminum on the **U1252-1253**. On the **U1254-U1256** gangs, the bussing is $\frac{3}{8}$ " x 1" aluminum.
- **Additional positions:** **U1252** and **U1253** additional positions requires utility approval.

*Barrel lock with guard provision (suffix **-BLG**).

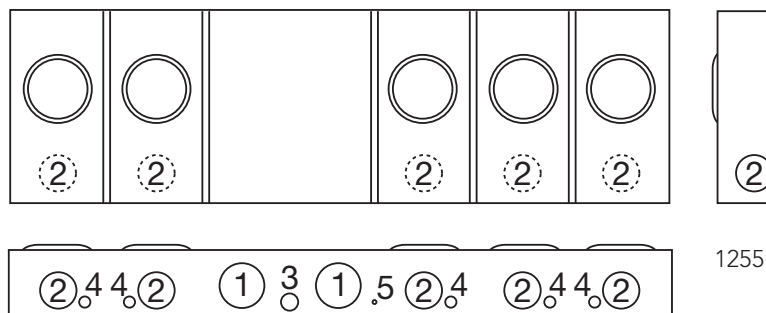
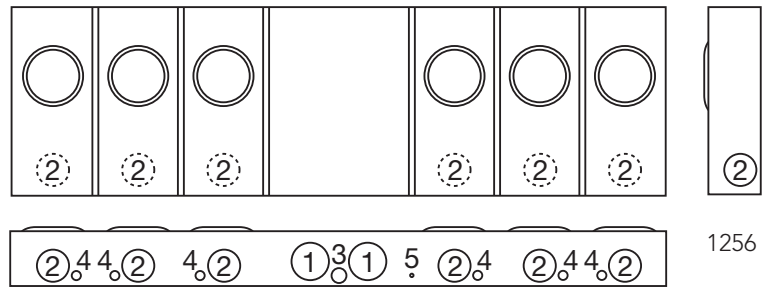
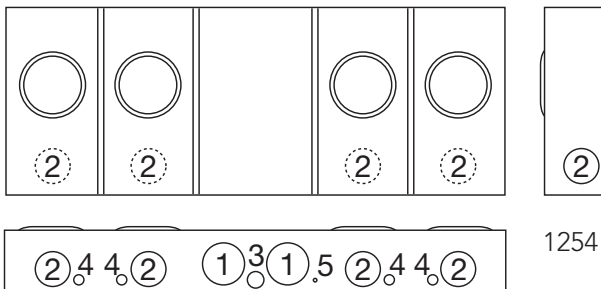
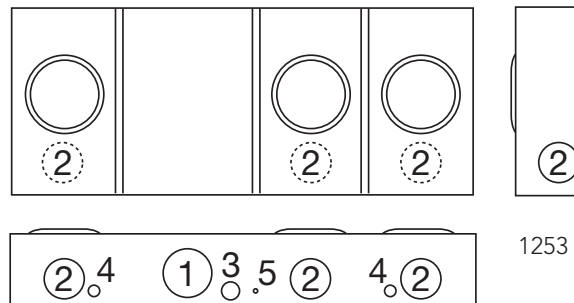
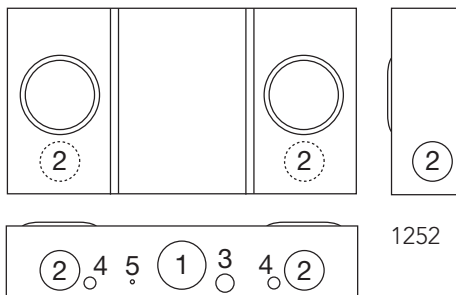


Please consult serving utility for their requirements prior to ordering or installing, as specifications and approvals vary by utility, and may require local electrical inspector approval. All installations must be installed by a licensed electrician and must comply with all national and local codes, laws and regulations. Milbank reserves the right to make changes in specifications and features shown without notice or obligation.

U1252-U1256 Series

Knockout Information

Knockouts				
1	2	3	4	5
3	2½	1	½	¼

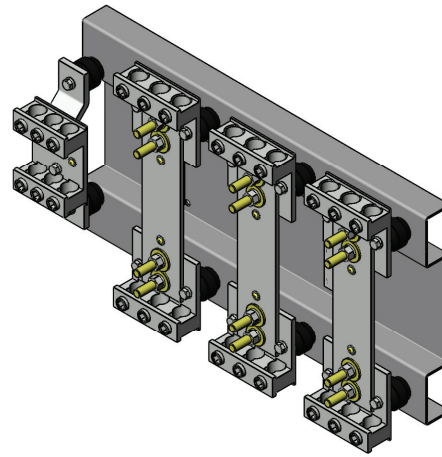
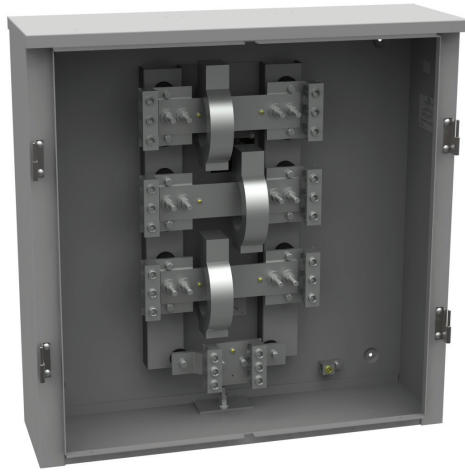


Please consult serving utility for their requirements prior to ordering or installing, as specifications and approvals vary by utility, and may require local electrical inspector approval. All installations must be installed by a licensed electrician and must comply with all national and local codes, laws and regulations. Milbank reserves the right to make changes in specifications and features shown without notice or obligation.



Transformer Cabinet

800 Amps | JCP&L Approved



U5990-O

800 Amps | Transformer Cabinet | 3Ø4W | 600 VAC

Catalog Number	Utility Approval	Gauge of Steel	Dimensions			CT Mounting Provision
			D"	W"	H"	
U5990-O	JCP&L	12	10	36	36	CT mounting rack included

Notes

- **SCCR:** Has an SCCR rating of 50K.
- **Enclosure:** NEMA 3R weather-resistant, vandal-resistant cabinet of polyurethane powder-coated steel.
- **Padlocking provision:** Handle three-point latch with padlock provision.
- **Phase:** Each phase has a three-position connector for #4-600 single conductor or 1/0-250 for two conductors.

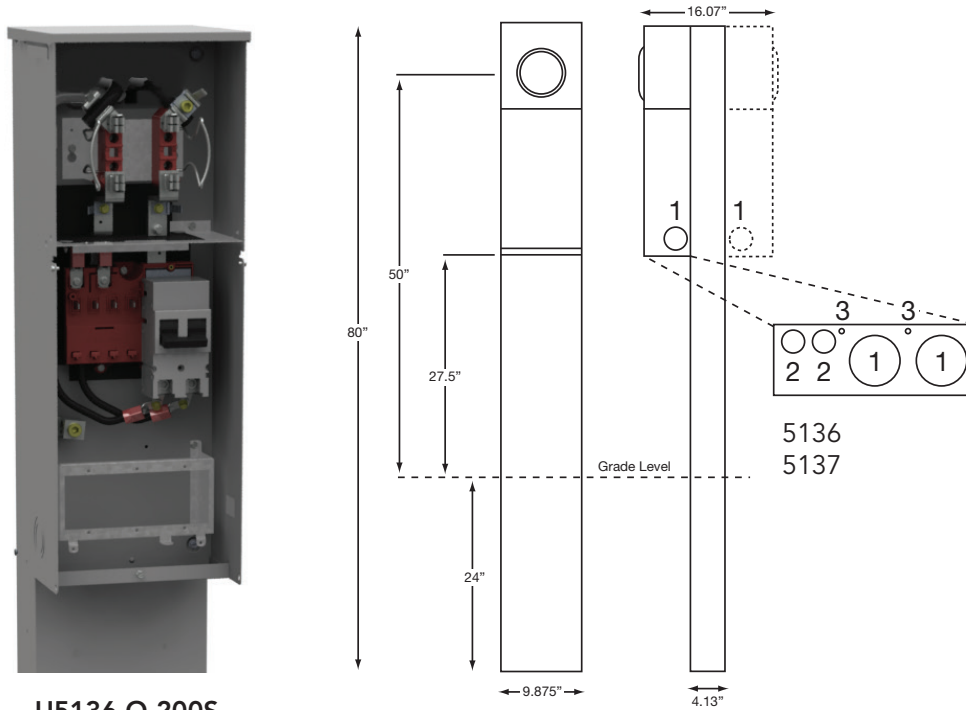


Please consult serving utility for their requirements prior to ordering or installing, as specifications and approvals vary by utility, and may require local electrical inspector approval. All installations must be installed by a licensed electrician and must comply with all national and local codes, laws and regulations. Milbank reserves the right to make changes in specifications and features shown without notice or obligation.

Meter Mains w/ Load Center Pedestal

19

100–200 Amps | 4 Terminals | Ringless | 120/240 VAC



U5136-O-200S

100–200 Amps | Ringless | Direct Bury

Catalog Number	Powerheads	Amps	Main Breaker	Interior	Dimensions			Knockouts		
					D"	W"	H"	1	2	3
U5136-O-100S	Single	100	UQFP-M-100 (Series)	4 circuit	10 $\frac{1}{4}$	10	80	2	$\frac{1}{2}$, $\frac{3}{4}$	$\frac{1}{4}$
U5136-O-200S	Single	200	UQFP-M-200 (Series)	4 circuit	10 $\frac{1}{4}$	10	80	2	$\frac{1}{2}$, $\frac{3}{4}$	$\frac{1}{4}$
U5137-O-100S	Double	100	(2) UQFP-M-100 (Series)	4 circuit	16 $\frac{1}{4}$	10	80	2	$\frac{1}{2}$, $\frac{3}{4}$	$\frac{1}{4}$
U5137-O-200S	Double	200	(2) UQFP-M-200 (Series)	4 circuit	16 $\frac{1}{4}$	10	80	2	$\frac{1}{2}$, $\frac{3}{4}$	$\frac{1}{4}$

Notes

- **Fifth terminal:** For field-installable fifth terminal, order **K5T**.
- **Stabilizer foot:** For field-installable stabilizer foot, order **K5415**.
- **Penta bolt locking:** For field-installable pedestal fronts with penta bolt locking, order **K5039**.
- **Receptacles:** Consult factory for installed receptacle assemblies.
- **Pad-mount units:** Pad-mount pedestals are available. Order **U5138** (single meter) or **U5139** (double meter) prefix. **K5035** pad-mount kit required. Order separately.

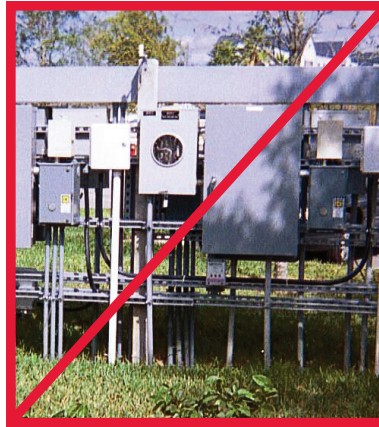
Please consult serving utility for their requirements prior to ordering or installing, as specifications and approvals vary by utility, and may require local electrical inspector approval. All installations must be installed by a licensed electrician and must comply with all national and local codes, laws and regulations. Milbank reserves the right to make changes in specifications and features shown without notice or obligation.



Enclosed Controls

Attractive | Easy to Install | Secure | Cost-Effective

Milbank Enclosed Controls are pad or surface-mounted, weather-resistant electrical enclosures consisting of a utility pull section with optional meter socket and a customer section containing distribution and control equipment. Commercial pedestals are an attractive, secure, easy-to-install and cost-effective solution when underground remote site power distribution and control equipment is required, replacing unsightly and inefficient strut and backboard structures.



Strut and backboard

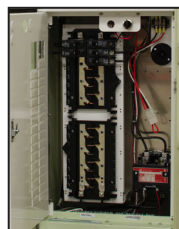
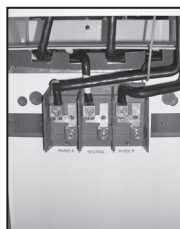


Commercial pedestal

UL Listed as Industrial Control Equipment (File E113855)

Standard Features

- NEMA 3R weather-resistant, vandal-resistant cabinet of polyurethane powder coated steel (aluminum or stainless steel also available)
- UL listed as enclosed industrial control equipment (UL508A)
- Isolated lockable and sealable utility metering and lug landing sections
- Lockable customer section for distribution and control equipment with internal deadfront
- Print pocket inside customer section door contains wiring schematics and installation instructions
- Load centers are UL listed for use with various manufacturers' circuit breakers
- All stainless steel external hardware (screws, bolts, hinges, handles, hasps and sealing screws)



Please consult serving utility for their requirements prior to ordering or installing, as specifications and approvals vary by utility, and may require local electrical inspector approval. All installations must be installed by a licensed electrician and must comply with all national and local codes, laws and regulations. Milbank reserves the right to make changes in specifications and features shown without notice or obligation.



Attractive | Easy to Install | Secure | Cost-Effective



Applications

These units are ideal for controlling and metering:

- Traffic signals
- Street lighting
- Power distribution for electronic vehicle charging stations
- Communication equipment such as cell towers and telephone vaults
- Event power for fairgrounds, swap meets, outdoor markets, portable offices, holiday lights, etc.
- Outdoor lighting for athletic fields, tennis and basketball courts, parking lots, landscaping and subdivision entrances, etc.

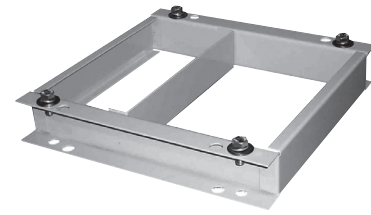
Available Factory-Installed Options

- Meter sockets: ring type or ringless, up to 400 Amps
- Main and branch breakers or T fuses
- Distribution: copper load centers and panelboards
- Clocks, timers and relays
- Photoelectric cells and controls
- Various power receptacles: pin and sleeve, twist lock or straight blade
- Contactors: lighting, definite purpose, motor starters
- Surge protection and lightning arrestors
- Generator inlets with interlocked breakers
- Push button controls
- Thermostat controls, fans and heating strips
- Power blocks and terminal blocks
- Steel, aluminum and plywood backboards
- Transformers
- Interlock devices for circuit breakers

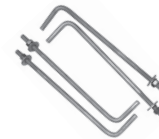
Options

- Available in steel, aluminum (raw painted or anodized) or stainless steel construction with powder coated finish available in eight standard colors or special-ordered RAL colors
- Available for applications up to 400 Amps, 120V, 208V, 240V, 277V, 480V - 1Ø or 3Ø

Accessories



Padmount bases available for all pedestal sizes, inquire with your representative for details



CP-ABK5/8
Anchor bolt kit
(includes four 5/8 - 13 x 18" anchor bolts)



105J
Fifth terminal kit for use with ring type meter sockets

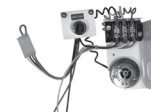


K3865
Fifth terminal kit for use with ringless meter sockets



CP-TC7D
7-day time clock kit
CP-TC24H
24-hour time clock kit
CP-TCWIRE

Male 4-pin connector and wiring harness for use with time clocks other than above



CP-PE-HOA-3POS
HOA switch for field installation



Please consult serving utility for their requirements prior to ordering or installing, as specifications and approvals vary by utility, and may require local electrical inspector approval. All installations must be installed by a licensed electrician and must comply with all national and local codes, laws and regulations. Milbank reserves the right to make changes in specifications and features shown without notice or obligation.

Enclosed Controls

23

Main Load Center Commercial Pedestals

Main Load Center Commercial Pedestal

1Ø3 wire 120/240V or 208Y/120V

Application: remote site service for multiple loads

Milbank Main Load Center Commercial Pedestals are designed to handle the vast majority of all requirements in a standard, stocked configuration.

- All units feature a load center with a plug-on, back-fed main breaker.
- Standard units are equipped with with a 16 circuit load center in the 100 Amps or 24 circuit load center in 200 Amps models
- Sub-feed lugs to allow feeding an external panel.

If your application requires turning loads on based on "dusk-to-dawn" requirements, be sure to see the Milbank Switched Load Center Commercial Pedestal products on the following page.

Features

These units include everything required for remote site service:

- Expandable: load centers allow for future expansion without costly modifications.
- All units feature a 200 Amps meter socket with optional field-installable fifth terminal kit available.
- 22K Amps interrupting capacity (AIC) standard.
- Optional mounting base can be embedded in concrete for fast, easy installation.
- Separate sealable and lockable utility termination section.
- Separate sealable and lockable metering section.
- Separate sealable and lockable customer section with a load center for "always on" loads that include a main circuit breaker, 20 (125 or 200 Amps model) or 14 (100 Amps model) blank breaker spaces and a circuit directory to document configuration.



Please consult serving utility for their requirements prior to ordering or installing, as specifications and approvals vary by utility, and may require local electrical inspector approval. All installations must be installed by a licensed electrician and must comply with all national and local codes, laws and regulations. Milbank reserves the right to make changes in specifications and features shown without notice or obligation.



Switched Load Center Commercial Pedestals

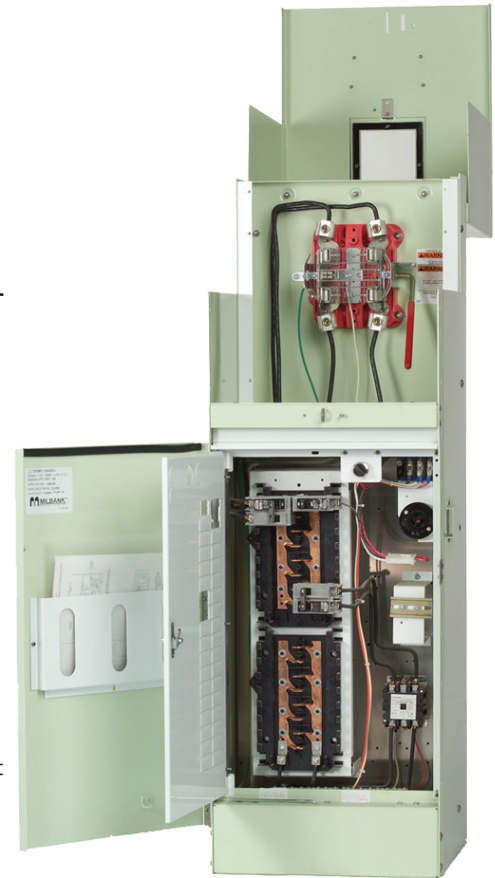
1Ø3 wire 120/240V or 208Y/120V

Designed not only to provide power for various loads, but also to switch specific loads on and off under certain conditions. A photoelectric cell is used for these controlled loads, and an optional time clock is also available.

Features

These units include everything required for remote site service:

- Expandable: load centers allow for future expansion without costly modifications.
- All units feature a 200 Amps meter socket with optional field-installable fifth terminal kit available.
- 22K Amps interrupting capacity (AIC) standard.
- Optional mounting base can be embedded in concrete for fast, easy installation.
- Separate sealable and lockable utility termination section.
- Separate sealable and lockable metering section.
- Separate sealable and lockable customer section with a control circuit including PE receptacle, Lexan® window, glare shield, Hand-Off-Auto (HOA) switch, contractor controlling a 16-circuit load center for controlled loads, a pre-mounted DIN rail and pre-wired connector to add an optional "plug-and-play" time clock kit for PE on and TC off operation and a circuit directory to document configuration.
- A load center for "always on" loads that includes a main circuit breaker, a control power circuit breaker, a switched load center main breaker, nine (125 or 200 Amps model) or 11 (100 Amps model) blank breaker spaces and a circuit directory to document configuration.

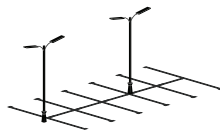


Ringless Lever Bypass shown

Applications



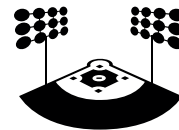
Traffic Signals



Parking Lots



Highways



Athletic Field Lighting



Please consult serving utility for their requirements prior to ordering or installing, as specifications and approvals vary by utility, and may require local electrical inspector approval. All installations must be installed by a licensed electrician and must comply with all national and local codes, laws and regulations. Milbank reserves the right to make changes in specifications and features shown without notice or obligation.

Enclosed Controls

25

400 Amps Commercial Pedestals



Designed to provide a weather and vandal resistant metered enclosure for various loads and distribution. Each pedestal has been designed to handle a wide range of applications using standard, stocked configurations.

- Choice of a single main breaker or twin service disconnect breakers gives flexibility to the pedestal design.
- Optional distribution with feed-through lugs below the service disconnect breakers allows the pedestal to handle numerous applications.
- Typical applications include remote homes where the metering is best located at the curb side or other remote area. The pedestal can also provide power to secondary residence, on-site business, workshop, irrigation, lighting, security or other secondary load.
- Refer to page 18 for color options

Features

These units include everything required for remote service:

- Main circuit breaker or dual service disconnects
- Expandable: load center units allow for future expansion without costly modifications
- Optional mounting base can be embedded in concrete for fast, easy installation
- Separate sealable and lockable utility termination section with lug termination
- Separate sealable and lockable metering section
- A separate sealable and lockable customer section with a circuit directory and a print pocket to hold all documentation
- Meter socket options include ring type with bypass studs, ringless with heavy duty lever bypass, or K-Type bolt-on

Applications



Commercial Job Sites



Remote Site for
Residential &
Commercial Job Sites

Please consult serving utility for their requirements prior to ordering or installing, as specifications and approvals vary by utility, and may require local electrical inspector approval. All installations must be installed by a licensed electrician and must comply with all national and local codes, laws and regulations. Milbank reserves the right to make changes in specifications and features shown without notice or obligation.



Surface-Mount Commercial Pedestal

Originally developed for small cellular communications, the surface-mount enclosed control offers the flexibility of larger enclosed controls products with a smaller footprint and several mounting options.

Features

- Easy installation
- Overhead and underground entry and exit, all in one unit
- Meter and components in one enclosure
- UL508A & UL891
 - Custom component configurations
 - UL listing covers all internal components
- Can be mounted on multiple surfaces
 - Walls
 - Poles – narrow profile will have minimal extension past sides
 - H Frames (Strut)
- Multiple bypass options available
- Monitoring options available
- Can be powder coated in any Milbank standard EC colors or custom colors.



Benefits

- Does not take up sidewalk space
- Flood resistant
- Eliminates need for connecting components - Wire in - Wire Out

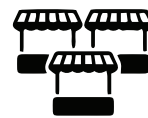
Applications



Communications
Power
Distribution



Lighting
Control



Streetscape
Power
Distribution



Please consult serving utility for their requirements prior to ordering or installing, as specifications and approvals vary by utility, and may require local electrical inspector approval. All installations must be installed by a licensed electrician and must comply with all national and local codes, laws and regulations. Milbank reserves the right to make changes in specifications and features shown without notice or obligation.

Battery Backup Commercial Pedestals



Designed to provide battery backup power for various loads, and to switch specific loads on and off under certain conditions; a photoelectric cell or time clock to control lighting circuits, as an example. Metered and unmetered power distribution options are available. The back-up power pedestal is designed to handle the vast majority of today's back-up power requirements. By using a 19" rack design, shelves can be adjusted to accommodate the required batteries and manufactures DC to AC inverters, transfer switches and other related equipment. This design gives the user a wide range of design and configuration options. Complete turnkey, ready to power-up pedestals are offered along with basic units ready to accept batteries and inverters supplied by others.

Features

- 100 through 320 Amps meter socket with the option of either a ring type socket (conforms to EUSERC 308) with or without test/bypass blocks or a heavy duty ringless socket with lever bypass
- Separate sealable utility termination compartment
- An isolated separate customer section with service disconnects, power distribution options and power control
- 19" wide rack in customer compartment for easy layout of equipment
- Battery trays
- Thermostat with cooling fan
- Filtered louvers for heat rise flow through ventilation
- Three point door latch (key or pad lockable)

Note

- May require customization based on regional requirements

Applications



Traffic Signals



Communications
Power Distribution



Parking Lots



Camera & Security
Locations

Options

- Manual bypass switch
- Transfer switch for generator power back-up
- Generator inlet receptacles 30 Amps through 200 Amps
- Pad lockable provision for receptacles
- Police access door
- Metered load center distribution
- Unmetered load center distribution
- Photo electric controls (for street lighting)
- Time clocks
- HOA switches
- Contactors
- GFCI duplex receptacles
- Thermostat for heating control
- Heating pads or elements
- Roll out shelves for batteries
- Surge arrestors and lighting arrestors

Please consult serving utility for their requirements prior to ordering or installing, as specifications and approvals vary by utility, and may require local electrical inspector approval. All installations must be installed by a licensed electrician and must comply with all national and local codes, laws and regulations. Milbank reserves the right to make changes in specifications and features shown without notice or obligation.





Providing metered or unmetered AC power, distribution, surge suppression, mechanical interlock and stand-by generator receptacle — all in a neat, compact pedestal.

Features

- 120/240V 1Ø3W through 277/480V 3Ø4W ratings
- Metered or unmetered units
- Choice of EUSERC ring type or ringless meter sockets
- 60 Amps through 400 Amps ratings
- Pad lockable, isolated utility compartments
- 20 Amps GFCI convenience receptacle
- Lockable recessed generator receptacle door
- Utility and generator indicator light options
- All stainless steel hardware
- Galvanized steel, aluminum or stainless steel cabinet options
- Custom designs available

Note

- May require customization based on regional requirements



Applications



Traffic Signals



Pump & Lift
Stations



Communications
Power Distribution



Please consult serving utility for their requirements prior to ordering or installing, as specifications and approvals vary by utility, and may require local electrical inspector approval. All installations must be installed by a licensed electrician and must comply with all national and local codes, laws and regulations. Milbank reserves the right to make changes in specifications and features shown without notice or obligation.

Enclosed Controls

CT Metered Commercial Pedestals



Designed to be used where a smaller service package would be a better choice over larger switchgear equipment, these pedestals have amperage ratings of 400 to 800 Amps at voltages up through 480 VAC three phase.

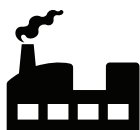
Features

- Up to 800 Amps
- A low profile CT pedestal
- All utility equipment is isolated in separated pad lockable and sealable compartments
- Separate customer compartment designed to hold distribution and control equipment
- Deadfront customer construction
- Optional mounting base
- Optional construction in steel, aluminum and stainless steel
- Wide choice of powder paint colors

Note

- May require customization based on regional requirements

Applications



Commercial &
Industrial Control
Systems



Pump & Lift
Stations



Water Treatment
Plants



Electric Vehicle
Charging Stations

Please consult serving utility for their requirements prior to ordering or installing, as specifications and approvals vary by utility, and may require local electrical inspector approval. All installations must be installed by a licensed electrician and must comply with all national and local codes, laws and regulations. Milbank reserves the right to make changes in specifications and features shown without notice or obligation.



Enclosed Controls

Slimline Commercial Pedestals



Provides a sleeker, smaller footprint, with wireway access on the side of the unit rather than the back, allowing maximum flexibility to place the pedestal anywhere physical space is at premium.

Providing unmetered AC power, distribution, surge suppression, mechanical interlock and stand-by generator receptacle — all in a neat, compact pedestal.

Features

- 100 or 200 Amps
 - Vandal-resistant, secure and attractive design
 - Customer compartment with distribution and control equipment with swing Deadfront door, secured with both a hasp/latch and draw latch outer door
 - Utility metering compartment protected with a hinged hood, increasing resistance to meter vandalism
 - Small footprint
 - Wireway located on left side of pedestal for utility incoming wire, allowing pedestal to be mounted with back as close as 14" to walls or structures
 - Available in 12" and 20" widths and 50" and 63" (metered) and 43" (unmetered) heights
 - Includes a print pocket for plans and drawings
 - Voltage range: 120V–480V
 - Compatible with both ringless and ring type meter sockets, 4–7 terminals
 - Available in a wide array of colors, including but not limited too all ANSI powder coated paint colors upon request
- Pedestal mounting base option saves time and labor to install on a cement pad—no anchor bolts required
 - Powder coated G90 galvanized steel or Aluminum; raw, anodized or powder coated, as well as stainless steel exterior options

Note

- May require customization based on regional requirements

Direct bury pedestals offer many advantages. With no need to coordinate, buy or wait for concrete, installation time can be cut down to less than an hour. Traditional direct bury pedestals are awkward to transport and handle and can only be used in a direct bury application. Milbank's modular design offers flexibility and convenience for distributors and contractors alike.

It's constructed with 14 gauge steel and only available for 12" pedestals.



Water Treatment
Plants



Highways



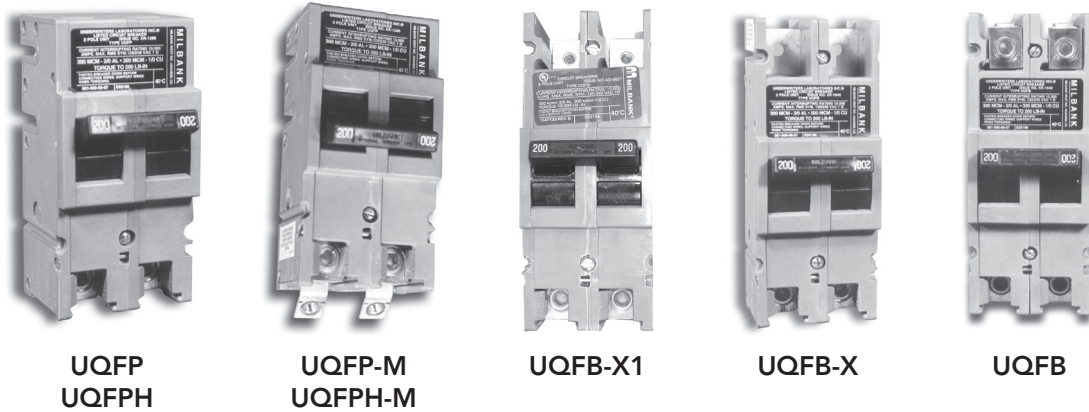
Parks &
Landscaping



Please consult serving utility for their requirements prior to ordering or installing, as specifications and approvals vary by utility, and may require local electrical inspector approval. All installations must be installed by a licensed electrician and must comply with all national and local codes, laws and regulations. Milbank reserves the right to make changes in specifications and features shown without notice or obligation.

Circuit Breakers

UQFP Plug-In & UQFB Bolt-On Series | 120/240 VAC



200 Amps Frame | Plug-In | 10,000 AIC & 22,000 AIC | Two-Pole - Common Trip

Amps	10K AIC Plug-In	22K AIC Plug-In	10K AIC Plug-In	22K AIC Plug-In	Wire Range	
					CU	AL
100	UQFP-100	UQFPH-100	UQFP-M-100	UQFPH-M-100	#3-#1	#1-1/0
125	UQFP-125	UQFPH-125	UQFP-M-125	UQFPH-M-125	#3-#1	#1-1/0
150	UQFP-150	UQFPH-150	UQFP-M-150	UQFPH-M-150	1/0-300	2/0-300
175	UQFP-175	UQFPH-175	UQFP-M-175	UQFPH-M-175	1/0-300	2/0-300
200	UQFP-200	UQFPH-200	UQFP-M-200	UQFPH-M-200	1/0-300	2/0-300

200 Amps Frame | Bolt-On | 10,000 AIC & 22,000 AIC | Two-Pole - Common Trip

Amps	10K AIC Bolt-On	22K AIC Bolt-On	10K AIC Bolt-On	22K AIC Bolt-On	Wire Range	
					CU	AL
100	UQFB-100	UQFBH-100	UQFB-100-X1	UQFBH-M-100	#3-#1	#1-1/0
125	UQFB-125	UQFBH-125	UQFB-125-X1	UQFBH-M-125	#3-#1	#1-1/0
150	UQFB-150	UQFBH-150	UQFB-150-X1	UQFBH-M-150	1/0-300	2/0-300
175	UQFB-175	UQFBH-175	UQFB-175-X1	UQFBH-M-175	1/0-300	2/0-300
200	UQFB-200	UQFBH-200	UQFB-200-X1	UQFBH-M-200	1/0-300	2/0-300

Notes

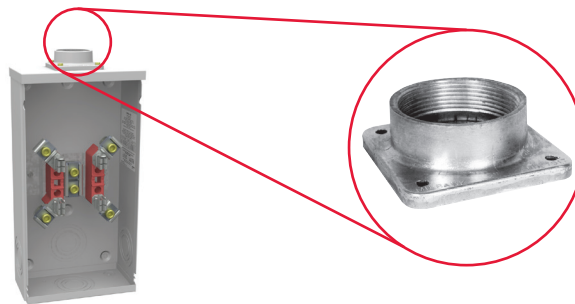
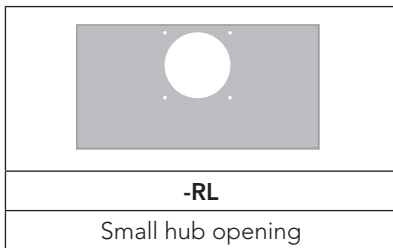
- **UL listed:** For use with 60°C or 75°C wire.
- **UQFP:** For parallel main circuit breaker applications.
- **UQFP-M:** For series main circuit breaker applications. Split load tab features allow for feed-through capability.
- **UQFB:** (2) 1/0-300 lugs provided on load and line side (cable-in, cable-out).
- **UQFB3:** Three-pole available. Consult factory.
- **UQFB-X:** (2) 1/0-300 lugs provided on load side and (2) line bar bus connections on line side.
- **UQFB-M:** For series main circuit breaker applications. Split load tab features allow for feed-through capability.
- **UQFB-X-MOD:** Replacement circuit breaker with line barriers removed.

Please consult serving utility for their requirements prior to ordering or installing, as specifications and approvals vary by utility, and may require local electrical inspector approval. All installations must be installed by a licensed electrician and must comply with all national and local codes, laws and regulations. Milbank reserves the right to make changes in specifications and features shown without notice or obligation.

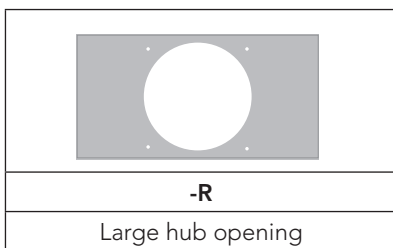


Accessories

Hubs and Closing Plates



-WL	A7514	-YL	A7515	-ZL	A7516	-DL	A7517	-EL	A7518	-XL	A7551
1" hub		1¼" hub		1½" hub		2" hub		2½" hub		Small closing plate	



-F	A8110	-G	A8111	H	A8112	-X	A9064	-RRL	S8324
3" hub		3½" hub		4" hub		Large closing plate		Large hub opening adapted to small hub opening	



Please consult serving utility for their requirements prior to ordering or installing, as specifications and approvals vary by utility, and may require local electrical inspector approval. All installations must be installed by a licensed electrician and must comply with all national and local codes, laws and regulations. Milbank reserves the right to make changes in specifications and features shown without notice or obligation.

Accessories

Connector Kits, Closing Kits and Sealing Rings

Connector Kits | For Use with 3/8"-16 Stud Type Units Only

Single			Twin		
Suffix	Part #	(3 per set) - 1Ø	Suffix	Part #	(3 per set) - 1Ø
K1	K1539	6-350	K2	K1350	6-350
K3	K1540	4-600 or (2) 1/0-250	K2L	K1350L	6-350 (non-rotating)
K3L	K1540L	4-600 or (2) 1/0-250 (non-rotating)	K4	K1541	4-600
Suffix	Part #	(4 per set) - 3Ø	Suffix	Part #	(4 per set) - 3Ø
K5	K3082	6-350	K6	K3442	6-350
K7	K3441	4-600 or (2) 1/0-250	K8	K3083	4-600

Bypass Link



Closing Covers

Meter Closing Plate (Ring Type/Ringless)	Metal Closing Plate (For Ringless Sockets)
6003 - Gray Plastic	CP-21
6116 - Clear Plastic	

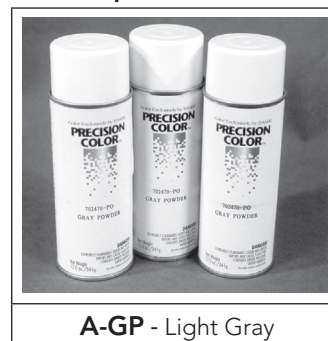
Generator Interlock

K5815 - large QN with small frame Q
K5820 - large frame QN with large frame QN
K5830 - small frame Q to small frame Q

Sealing Rings

MR-2 - Snap Action	MR-4 - Screw Type (Stainless Steel)
MR2-SS - Stainless Steel	

Touch-Up Paint

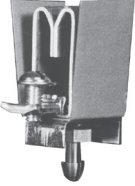
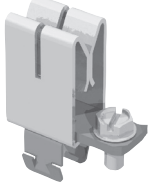

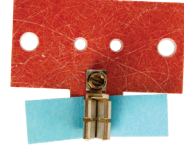


Please consult serving utility for their requirements prior to ordering or installing, as specifications and approvals vary by utility, and may require local electrical inspector approval. All installations must be installed by a licensed electrician and must comply with all national and local codes, laws and regulations. Milbank reserves the right to make changes in specifications and features shown without notice or obligation.

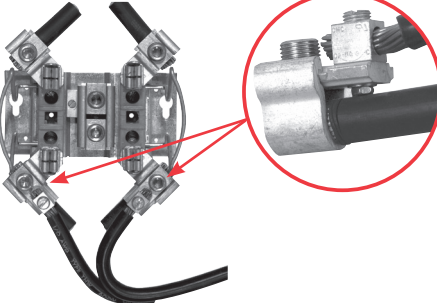


Fifth Terminal and Tap Connectors

Fifth Terminals

			
5T8K2 - 100-200 Amps "Plug-In"	K5T - 200 Amps (Block with Square Hole)	K3865 - Heavy Duty Jaw Clamping (K3866 without Neutral Wire)	This is for Condo Metering Banks (125-200 Amps) K2381

Tap Connectors (3 per set)

	Replaces the load or line side slide-in nut assembly on Milbank 200 Amps sockets. Allows for a 100 Amps tap location in addition to the #6-350 kcmil load-side connector. K5022 includes safety barrier extensions for applications over 300 VAC. Three lugs per kit.
K4977-INT - Internal Hex	
K4977-EXT - External Hex	
K5022-INT - Internal Hex (set of 4 w/ barrier)	

Pedestal Extension Units


Catalog Number	D"	W"	H"
S8988	4 ¹ / ₂	18 ³ / ₁₆	15
S3488	6	11	15
S2571	4 ¹ / ₂	10	12
S1848	4 ⁷ / ₈	13	15
K4694	6	9	24
K5800	4 ¹ / ₈	9	15

Isolated Neutral Kit


K1047*

*Isolated neutrals are specific to the meter socket. Consult factory for correct isolated neutral.

Anti-Inversion Clip


K4802

Disconnect Sleeve


M5-144

Triplex Ground


K1190 (For factory installed triplex ground, add suffix -TG to catalog number)



Please consult serving utility for their requirements prior to ordering or installing, as specifications and approvals vary by utility, and may require local electrical inspector approval. All installations must be installed by a licensed electrician and must comply with all national and local codes, laws and regulations. Milbank reserves the right to make changes in specifications and features shown without notice or obligation.

Conduit, Ampacity & SCCR

Reference Information

MAXIMUM NUMBER OF CONDUCTORS IN CONDUIT
Table from 2008 NEC Code Reference: Rigid Metal Conduit

Type	Conductor Size (AWG/kcmil)	Conduit Trade Sizes (Inches)									
		1/2	3/4	1	1 1/4	1 1/2	2	2 1/2	3	3 1/2	4
THHN, THWN, THWN-2	12	9	16	26	46	62	102	146	225	301	387
	10	6	10	17	29	39	64	92	142	189	244
	8	3	6	9	16	22	37	53	82	109	140
	6	2	4	4	12	16	27	38	59	79	101
	4	1	2	4	7	10	16	23	36	48	62
	3	1	1	3	6	8	14	20	31	41	53
	2	1	1	3	5	7	11	19	26	34	44
	1	1	1	1	4	5	8	12	19	25	35
	1/0	1	1	1	3	4	7	10	16	21	27
	2/0	0	1	1	2	3	6	8	13	18	23
3/0	0	1	1	1	3	5	7	11	15	19	
4/0	0	1	1	1	2	4	6	9	12	16	
XHH, XHHW, XHHW-2	4	1	2	4	7	10	16	24	37	49	63
	2	1	1	3	5	7	12	17	26	35	45
	1/0	1	1	1	3	4	7	10	16	22	28
	2/0	0	1	1	2	3	6	9	13	18	23
	4/0	0	1	1	1	2	4	6	9	12	16
	250	0	0	1	1	1	3	5	7	10	13
	350	0	0	1	1	1	2	3	6	7	10
500	0	0	0	1	1	1	2	4	5	7	
750	0	0	0	0	1	1	1	3	4	5	

This table is for concentric stranded conductors only. For cables with compact conductors refer to NEC. Refer to latest NEC Code or Local Codes for updated requirements.

SAMPLE RATING LABEL

CATALOG NUMBERS U5952 & U5953
100A MAXIMUM, 120/240 VAC SINGLE PHASE, THREE WIRE
RAINFOOF NEMA TYPE 3R

SHORT CIRCUIT CURRENT RATING IS 10,000 RMS SYMMETRICAL AMPERE AT 240 VAC MAXIMUM, BUT IS LIMITED TO THE LOWEST SHORT CIRCUIT CURRENT RATING OF ANY INSTALLED CIRCUIT BREAKER. WATTHOUR METER NOT INCLUDED IN SHORT CIRCUIT CURRENT RATING. REPLACEMENT CIRCUIT BREAKER MUST BE THE SAME TYPE AND RATING. USE SIEMENS QP, Q3; CUTLER-HAMMER QP, BD, BR; SQUARE D HOMELINE; G.E. TQ, THQ, THQL.

SUITABLE FOR USE AS RECREATIONAL VEHICLE SITE SUPPLY EQUIPMENT

UNDERGROUND FEED ONLY

ON TRIP OFF

TO RESET BREAKER MOVE TO "OFF" THEN TO "ON"

DANGER
HAZARD OF ELECTRICAL SHOCK OR BURN
TURN OFF POWER
SUPPLYING THIS EQUIPMENT BEFORE WORKING INSIDE

WIRE TERMINAL INFORMATION USE AL-CU CONDUCTORS		
TERMINAL	WIRE RANGE	TORQUE LB-IN
LINE AND LINE NEUTRAL	350 KCMIL - #6	250
GROUND CONNECTOR	2/0 AWG - #14 AWG	120
LOAD NEUTRAL SLOTTED HEAD (LARGE HOLE)	14 - 10 8 6 - 4 3 - 1/0	35 40 45 50
LOAD NEUTRAL SLOTTED HEAD (SMALL HOLE)	14 - 10 8 6	20 25 35

SHIPPING TENDS TO LOOSEN BOLTED CONNECTIONS. CHECK AND TIGHTEN ALL HARDWARE BEFORE ENERGIZING UNIT

SIZE OF FIELD INSTALLED CONDUCTORS SHALL BE 60° OR 75°C SIZED TO 60°C RATING FOR 110 AMPS OR LESS AND 75°C SIZED TO 75°C FOR 125 AMPS AND ABOVE

*** ALLOWABLE AMPACITIES OF INSULATED COPPER & ALUMINUM CONDUCTORS (3W IN CONDUIT) 75° C (167° F)**

A		AL or **CU-Clad AL	
A	B	A	B
18	—	—	—
16	—	—	—
14	20†	—	—
12	25†	12	20†
10	35†	10	30†
8	50	8	40
6	65	6	50
4	85	4	65
3	100	3	75
2	115	2	90
1	130	1	100
1/0	150	1/0	120
2/0	175	2/0	135
3/0	200	3/0	155
4/0	230	4/0	180
250	255	250	205
300	285	300	230
350	310	350	250
400	335	400	270
500	380	500	310
600	420	600	340
700	460	700	375
750	475	750	385

A = Size: AWG/MCM
*B = Ampere Rating for Insulation Types:
FEPW, RH, RHW, THW, THWN, XHHW, USE, 2W.
**C = Ampere Rating for Insulation Types:
RH, RHW, THW, THWN, XHHW, USE
(Per NEC table 310-16)

AMPACITY CORRECTION FACTORS

Ambient Temp. C°	Correction Factor	Ambient Temp. F°
21 - 25	1.05	70 - 77
25 - 30	1.00	78 - 86
31 - 35	.94	87 - 95
36 - 40	.88	96 - 104
41 - 45	.82	105 - 113
46 - 50	.75	114 - 122
51 - 55	.67	123 - 131
56 - 60	.58	132 - 140
61 - 65	.33	141 - 158

Overall ampere ratings of U/L listed Milbank multiple position meter sockets are based on **2008 N.E.C. Handbook Article 220-84** and **ANSI / UL-414** (except where restricted by line connector size.) These requirements provide for a diversity factor / demand factor being utilized in determining the overall (main bus / lug) rating of a gang socket. All Milbank U/L listed gang sockets meet or exceed these diversity factor/demand and factor requirements. Standard overall ampacity ratings for U/L listed and non U/L listed gang sockets are as shown in the chart below. Ampere ratings of meter sockets are based on the meter socket being wired with 75° C insulated wire conductor, sized in accordance with **Table 310-16** of the **National Electric Code**.

Please consult serving utility for their requirements prior to ordering or installing, as specifications and approvals vary by utility, and may require local electrical inspector approval. All installations must be installed by a licensed electrician and must comply with all national and local codes, laws and regulations. Milbank reserves the right to make changes in specifications and features shown without notice or obligation.



36

Energization of Electrical Equipment

Important Information for Installers

Important Note

In addition to national and local electrical codes, many utilities have specific requirements for metering equipment. Always consult the serving utility for their specifications and requirements prior to ordering or installing Milbank meter mounting equipment.

Before Energizing

1. Give equipment a thorough visual examination to determine that:
 - a) No shipping or installation damage exists.
 - b) Proper clearances have been maintained.
 - c) All connections have been made.
 - d) Equipment is clean and dry.
2. Make a thorough examination to:
 - a) Verify tightness of all bolted connections (see table below).
 - b) Manually operate all circuit breakers, switches, relays, etc.
 - c) Check rigidity of all mountings, bus bars and components.
 - d) Use test equipment to check continuity of circuitry and integrity of insulation.
3. All switches and circuit breakers should be in the OFF position.
4. Verify that manual meter bypass (if applicable) is in non-bypass position.
5. Install cover and/or close doors.
6. If installation is not being energized at this time, follow "after-energizing" steps listed below. These steps will secure the installation in case of accidental energization.

When Energizing

1. Use caution and follow established safety procedures:
 - a) Wear safety apparel.
 - b) Use safety equipment.
 - c) Take action to prevent injury to yourself and others in the event of failure of the installation.
 - d) Take action to prevent/decrease damage to property in the event of failure of the installation.
 - e) If you are unsure how to safely energize the installation, get someone who is knowledgeable to do it.

After Energizing

1. Secure the installation:
 - a) To prevent accidental contact with energized parts, cover all openings with approved filler devices.
 - b) To prevent unauthorized access, secure all covers and/or doors with approved security devices.
 - c) Attach/post information to advise others of potential hazards associated with the installation.

Recommended Torque for General Applications*

Nominal Size	Joint Description		Head Type	Torque (Inch Lbs.)
	Screw	Nut		
10	Brass	Brass Nut or Extruded Hole	All	20-25 inch lbs.
10	Steel	Copper or Aluminum Busbar ≤ 1/8"	All	25-30 inch lbs.
10	Steel	Steel Nut or Extruded Hole; CU or AL Busbar > 1/8"	All	30-35 inch lbs.
12	Steel	Aluminum Extruded Hole	All	30-35 inch lbs.
12	Steel	Steel Nut or Extruded Hole	All	40-50 inch lbs.
1/4	Steel	Aluminum Extruded Hole	All	40-50 inch lbs.
1/4	Steel	Steel Nut or Extruded Hole; CU or AL Busbar	All	50-60 inch lbs.
5/16	Steel	Aluminum Extruded Hole	Hex	60-70 inch lbs.
5/16	Steel	Steel Nut or Extruded Hole; CU or AL Busbar	Hex	100-150 inch lbs.
3/8	Steel	Steel Nut	Hex	150-200 inch lbs.
1/2	Steel	Steel Nut	Hex	200-250 inch lbs.

* Interior labels typically indicate the required torque for wire connectors and studs, and should be referenced first.
CU: Copper
AL: Aluminum



Please consult serving utility for their requirements prior to ordering or installing, as specifications and approvals vary by utility, and may require local electrical inspector approval. All installations must be installed by a licensed electrician and must comply with all national and local codes, laws and regulations. Milbank reserves the right to make changes in specifications and features shown without notice or obligation.

Reference Information

Materials

Steel Quality

The meter equipment listed in this catalog is made of galvanized steel (AISI* G90) to afford the best possible weather proofing.
*American Iron and Steel Institute.

Steel Sheet

16 gauge, galvanized, sheet: 1 1/4 oz./ sq.ft. class zinc-coated. (AISI G90)
14 gauge, galvanized, sheet: 1 1/4 oz./ sq.ft. class zinc-coated.

Aluminum Extrusion

Wire-Terminal: Alloy; 6061-T6, Tin-plated for CU/AL wire.
Bus Bar: Alloy; 6101-O & 6063-O

Aluminum Sheet

3000 series aluminum sheet, H14, or 5052 series aluminum sheet, H32. Where applicable thicknesses range from .064-.125

Copper Sheet & Bus

Electrolytic copper with tin plating in most applications.

Insulating Materials

- In most units, support bases for current-carrying components are molded from fiberglass reinforced high-strength, track resistant, thermoset polyester molding compounds.
- Clear or black safety shields and polarity barriers are molded from high-strength, track resistant, polycarbonate molding compounds.
- Various sheet insulating materials, as appropriate for the application are utilized in the fabrication of flat, formed and punched component parts and barriers.

Finish

Process

Light gray state-of-the-art electrostatically applied powder paint offers a durable, non-fading finish. For further information concerning the chemical analysis of the weather-resistant finish, please contact the factory.

Metal Fasteners

Zinc-coated with a chromate dip.

Ratings & Compliance

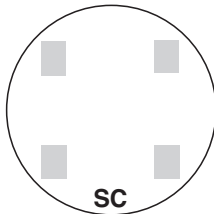
Ratings & Compliance

All Milbank electrical enclosures in this catalog are rated "Type 3R Enclosure" unless specified otherwise on the product's page. All enclosures with a UL designation are constructed per the appropriate UL Standard and may be installed per the National Electric Code. UL procedure files associated with the UL Standards are listed as follows: Meter Sockets (UL 414, File E30202), Test Switches (UL 414, File E62531), Power Outlets (UL 231, File E90945), Panelboards (UL 67, File E32628) and Pullout Switches (UL 1429, File E133062). Additional standards are utilized as applicable: Meter Sockets (ANSI C12.7), Test Switches (ANSI C12.9) and Panelboards (NEMA PB-1).

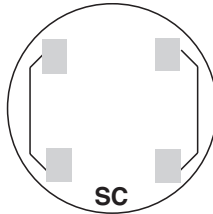
Please consult serving utility for their requirements prior to ordering or installing, as specifications and approvals vary by utility, and may require local electrical inspector approval. All installations must be installed by a licensed electrician and must comply with all national and local codes, laws and regulations. Milbank reserves the right to make changes in specifications and features shown without notice or obligation.



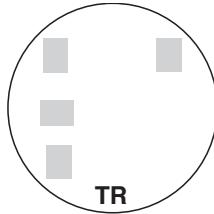
Standard Forms | Transformer Rated or Self-Contained



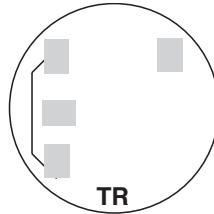
SC
2 and 3-WIRE FORMS
1S & 2S



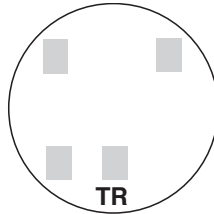
SC
2 and 3-WIRE FORMS
1S & 2S with BYPASS



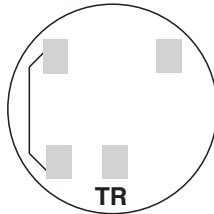
TR
2-WIRE FORM 3S
5th Term. 9 o'clock



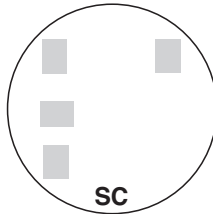
TR
2-WIRE FORM 3S
with BYPASS



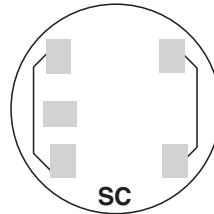
TR
2-WIRE FORM 3S
5th Term. 6 o'clock



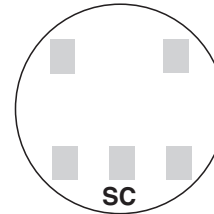
TR
2-WIRE FORM 3S
with BYPASS



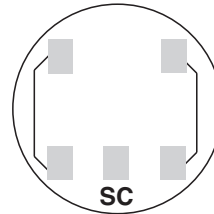
SC
2 ELEMENT
3-WIRE NETWORK
FORM 12S 5th
TERM. 9 o'clock



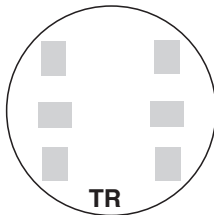
SC
2 ELEMENT 3-WIRE
NETWORK FORM 12S
with BYPASS
5th Term. 9 o'clock



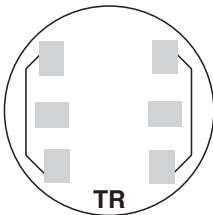
SC
2 ELEMENT
3-WIRE NETWORK
FORM 12S 5th
TERM. 6 o'clock



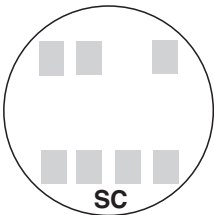
SC
2 ELEMENT 3-WIRE
NETWORK FORM 12S
with BYPASS
5th Term. 6 o'clock



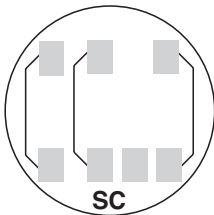
TR
3-WIRE FORM 4S



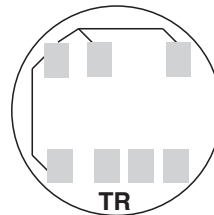
TR
3-WIRE FORM 4S
WITH BYPASS



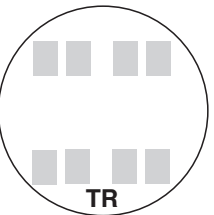
SC
2 or 3 ELEMENT
3Ø4W Y or Δ
Y FORM 14S
Δ FORM 15S



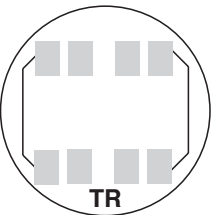
SC
2 or 3 ELEMENT
3Ø4W Y or Δ
FORMS 14S & 15S
with BYPASS



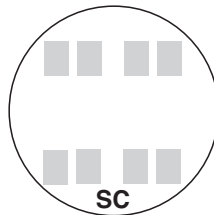
TR
2 ELEMENT
3Ø4W Y or Δ
Y FORM 7S
Δ FORM 24S
with BYPASS



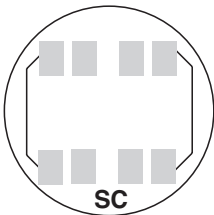
TR
2 ELEMENT
2Ø3W, 2Ø4W, 3Ø3W
FORM 5S



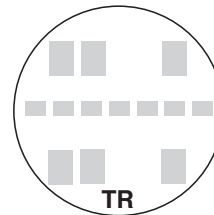
TR
2 ELEMENT 2Ø3W,
2Ø4W, 3Ø3W
FORM 5S with
BYPASS



SC
2 ELEMENT
2Ø3W, 2Ø4W, 3Ø3W
FORM 13S

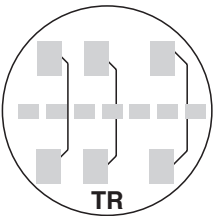


SC
2 or 3 ELEMENT
2Ø3W, 2Ø4W, 3Ø3W
FORM 13S with
BYPASS

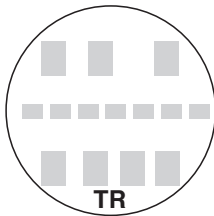


TR
2 or 3 ELEMENT
3Ø4W Y or Δ
Y FORM 9S
Δ FORM 8S

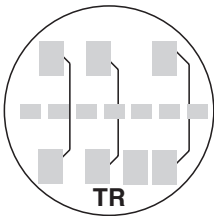
TR = TRANSFORMER RATED
SC = SELF CONTAINED



TR
2 or 3 ELEMENT
3Ø4W Y or Δ
FORMS 8S & 9S
with BYPASS



TR
2 ELEMENT
3Ø4W Y
FORM 6S



TR
2 ELEMENT
3Ø4W Y
FORM 6S
with BYPASS

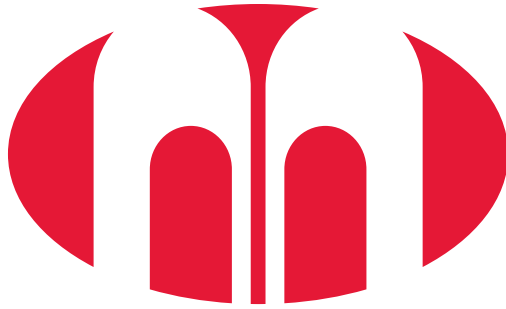


Please consult serving utility for their requirements prior to ordering or installing, as specifications and approvals vary by utility, and may require local electrical inspector approval. All installations must be installed by a licensed electrician and must comply with all national and local codes, laws and regulations. Milbank reserves the right to make changes in specifications and features shown without notice or obligation.

6003.....	33	U1252-X-KK-K3-BLG.....	16	UQFB-125.....	31
6116.....	33	U1253-X-KK-K3-BLG.....	16	UQFB-125-X1.....	31
5T8K2.....	34	U1254-X-KK-K3-BLG.....	16	UQFB-150.....	31
A7514.....	32	U1255-X-KK-K3-BLG.....	16	UQFB-150-X1.....	31
A7515.....	32	U1256-X-KK-K3-BLG.....	16	UQFB-175.....	31
A7516.....	32	U1282-XL-KK-BLG.....	14	UQFB-175-X1.....	31
A7517.....	32	U1283-XL-KK-BLG.....	14	UQFB-200.....	31
A7518.....	32	U1284-XL-KK-BLG.....	14	UQFB-200-X1.....	31
A7551.....	32	U1779-R-K3-BLG.....	11	UQFBH-100.....	31
A8110.....	32	U3126-O-KK-BLG.....	9	UQFBH-125.....	31
A8111.....	32	U3786-O-BLG.....	10	UQFBH-150.....	31
A8112.....	32	U3798-O-200-KK.....	12	UQFBH-175.....	31
A9064.....	32	U3802.....	5	UQFBH-200.....	31
A-GP.....	33	U3812.....	5	UQFBH-M-100.....	31
CP-21.....	33	U3822-20GWR.....	6	UQFBH-M-125.....	31
K1047.....	34	U3832.....	5	UQFBH-M-150.....	31
K1190.....	34	U3862.....	5	UQFBH-M-175.....	31
K1350.....	33	U3924-XL.....	10	UQFBH-M-200.....	31
K1350L.....	33	U4168-X-K7-BLG.....	11	UQFP-100.....	31
K1539.....	33	U4184-O.....	10	UQFP-125.....	31
K1540.....	33	U4367-XPF-BLG.....	11	UQFP-150.....	31
K1540L.....	33	U4413-O-KK-BLG.....	9	UQFP-175.....	31
K1541.....	33	U4701-XL-BLG.....	10	UQFP-200.....	31
K2381.....	34	U4881-O.....	7	UQFPH-100.....	31
K3082.....	33	U4881-O-50GB.....	7	UQFPH-125.....	31
K3083.....	33	U4881-O-60GB.....	7	UQFPH-150.....	31
K3441.....	33	U4912-X-K3-BLG.....	11	UQFPH-175.....	31
K3442.....	33	U5136-O-100S.....	19	UQFPH-200.....	31
K3865.....	34	U5136-O-200S.....	19	UQFPH-M-100.....	31
K3866.....	34	U5137-O-100S.....	19	UQFPH-M-125.....	31
K4694.....	34	U5137-O-200S.....	19	UQFPH-M-150.....	31
K4802.....	34	U5168-XTL-100-KK-BLG.....	13	UQFPH-M-175.....	31
K4977-EXT.....	34	U5168-XTL-200-KK-BLG.....	13	UQFPH-M-200.....	31
K4977-INT.....	34	U5898-O-200-KK-BLG.....	13	UQFP-M-100.....	31
K5022-INT.....	34	U5990-O.....	18	UQFP-M-125.....	31
K5800.....	34	U6224-O.....	19	UQFP-M-150.....	31
K5815.....	33	U7021-DL-TG-KK-BLG.....	9	UQFP-M-175.....	31
K5820.....	33	U7375-RL-KK.....	12	UQFP-M-200.....	31
K5830.....	33	U7487-RL-TG-KK-BLG.....	8		
K5T.....	34	U7487-YL-TG-KK-BLG.....	8		
K6326.....	19	U7607-RL-200-KK-CECHA.....	12		
K8180.....	33	U8032-XL-KK-BLG.....	14		
M5-144.....	34	U8033-XL-KK-BLG.....	14		
MR-2.....	33	U8034-XL-KK-BLG.....	14		
MR2-SS.....	33	U8035-XL-KK-BLG.....	14		
MR-4.....	33	U8173-XL-KK-BLG.....	9		
S1848.....	34	U8569-YL-KK-BLG.....	8		
S2571.....	34	U9551-R-5T9.....	10		
S3488.....	34	U9700-RRL-BLG.....	10		
S8324.....	32	UQFB-100.....	31		
S8988.....	34	UQFB-100-X1.....	31		

Please consult serving utility for their requirements prior to ordering or installing, as specifications and approvals vary by utility, and may require local electrical inspector approval. All installations must be installed by a licensed electrician and must comply with all national and local codes, laws and regulations. Milbank reserves the right to make changes in specifications and features shown without notice or obligation.





MILBANK[®]

ENERGY AT WORK

