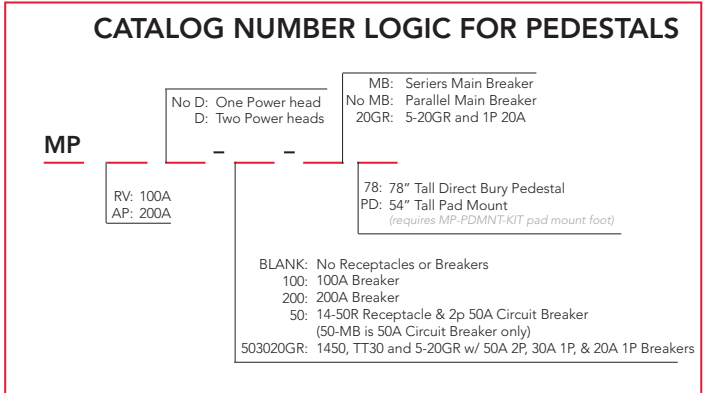
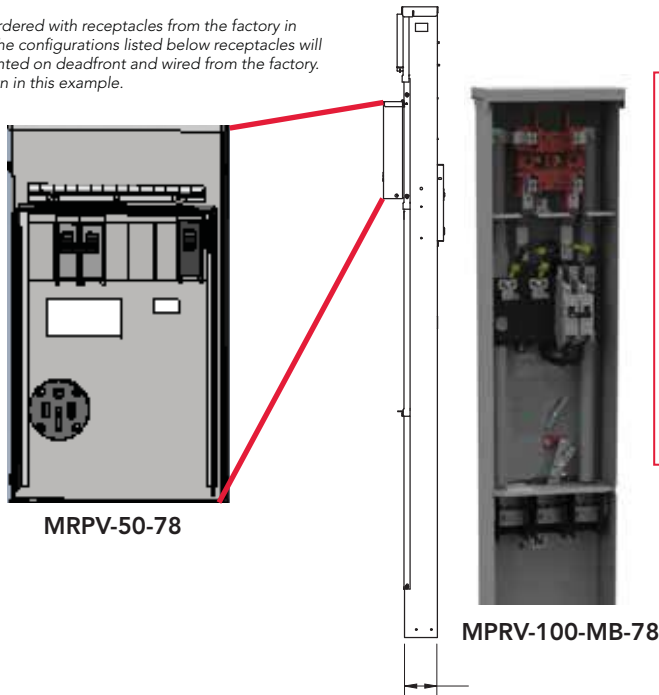


RV & MOBILE HOME 100A PEDESTALS

When ordered with receptacles from the factory in one of the configurations listed below receptacles will be mounted on deadfront and wired from the factory. As shown in this example.



Pedestal Power Head Rating	Catalog Number	Mount	Description
100	MPRV-BLANK-78	DB	Ring type, no breaker
	MPRV-100-MB-78	DB	Ring type, series wired, 100A breaker
	MPRV-100-MB-PD	PD	Ring type, series wired 100A main breaker, pad mount
	MPRV-100-20GR-78	DB	Ring type, parallel wired, 100A w/ 20A GFCI
	MPRV-50-78	DB	Ring type, 50A breaker and receptacle
	MPRV-50-PD	PD	Ring type, 50A breaker and receptacle, pad mount
	MPRV-50-MB-78	DB	Ring type, Parallel wired, 50A breaker
	MPRV-503020GR-78	DB	Ring type, parallel wired 50/30/20 receptacle & breaker configuration
	*MPRVD-BLANK -78		Ring Type, no breaker, double
	*MPRVD-100-78	DB	Ring type, parallel wired, 100A breakers, double
	*MPRVD-100-MB-78	DB	Ring type, series wired, 100 amp, main breakers, double
	*MPRVD-100-MB-PD	PD	Ring type, series wired 100A main breakers, pad mount, double
	*MPRVD-503020GR-78	DB	Ring type, 50A, 30A and 20A receptacles with breakers, double

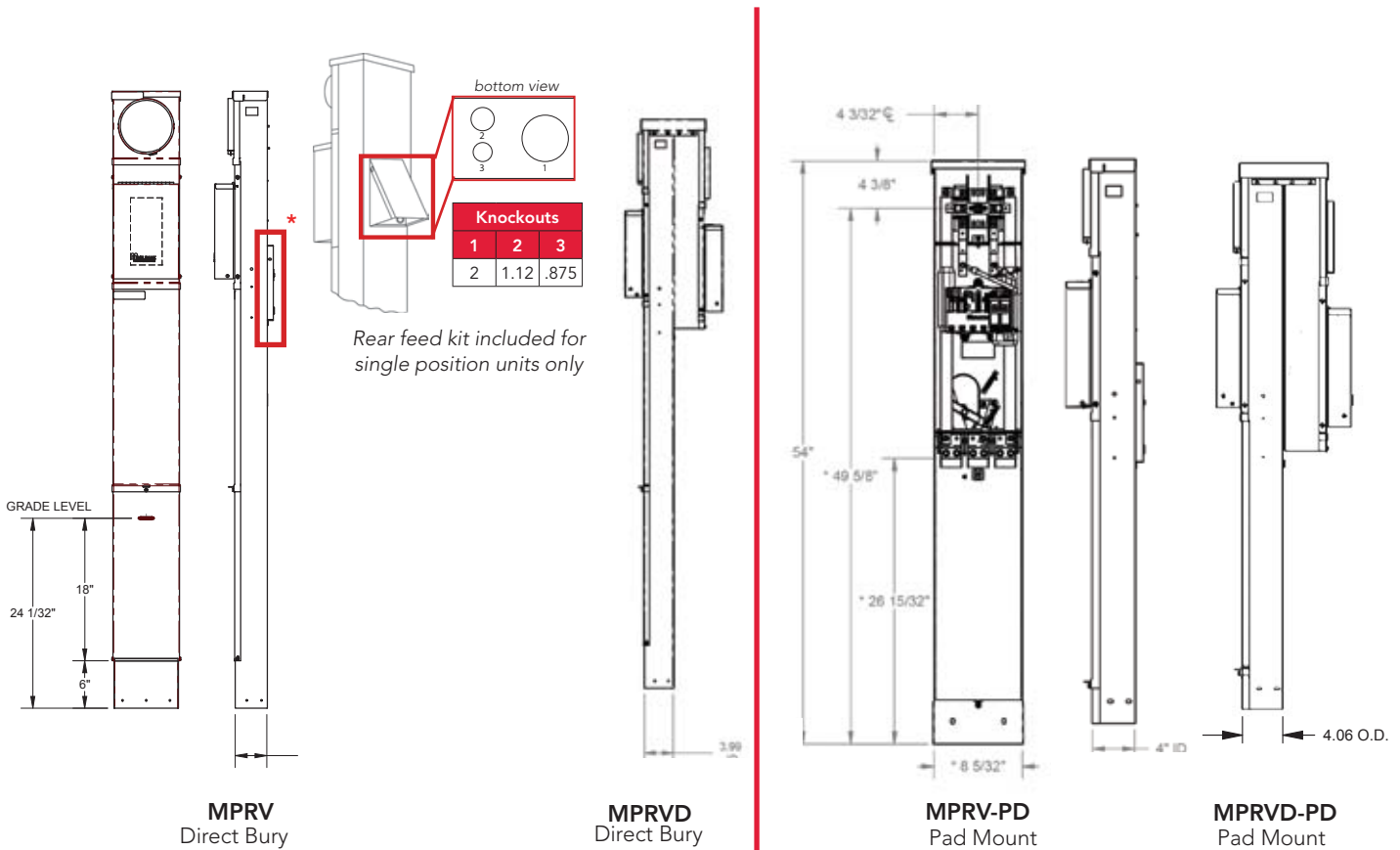
* MPRVD units are back to back double power head pedestals.
DB stands for Direct Bury
PD stands for Pad Mount

Please consult serving utility for their requirements prior to ordering or installing, as specifications and approvals vary by utility, and may require local electrical inspector approval. All installations must be installed by a licensed electrician and must comply with all national and local codes, laws and regulations. Milbank reserves the right to make changes in specifications and features shown without notice or obligation.



100 Amp Pedestals

100 Amp | Mobile Home Metered | 120/240 VAC



Specifications

- UL listed 100A MPRV
- Meets EUSERC drawing 307
- 120/240 volt single phase service
- Short circuit withstand rating: 10KAIC
- Line bus barrier made of rigid PVC conduit- factory installed
- Single or double power head available
- Direct Bury and Pad Mount available for single and double head pedestals
- Type 3R construction
- Twin line termination lugs #6-350 CU/AL per phase for loop feed wiring
- Furnished with space for six single or three double pole universal style, plug-in circuit breakers
- * Direct rear feed kit included (nested flat from factory in back cover), not included with MPRV-50-78. Purchase separately as catalog number PF-KR. (single powerhead only)
- MR-2 sealing ring standard with ring type cover
- Street light breaker kit available for MPRV & MPAP series, order catalog number K6299
- Pedestals painted with ANSI 61 gray powder coat finish standard. Other colors available, please contact factory.
- For Pad Mount Kit order MP-PDMNT-KIT
- For field installable receptacles and breakers please contact Milbank



Please consult serving utility for their requirements prior to ordering or installing, as specifications and approvals vary by utility, and may require local electrical inspector approval. All installations must be installed by a licensed electrician and must comply with all national and local codes, laws and regulations. Milbank reserves the right to make changes in specifications and features shown without notice or obligation.

RV & MOBILE HOME 200A PEDESTALS



MPAP-200-MB-78



MPAPD-BLANK-78

Pedestal Power Head Rating	Catalog Number	Mount	Description
200	MPAP-BLANK-78	DB	Ring type, No breakers
	MPAP-100-78	DB	Ring type, parallel wired, 100A breaker
	MPAP-100-MB-78	DB	Ring type, series wired, 100A main breaker
	MPAP-200-78	DB	Ring type, parallel wired, 200A breaker
	MPAP-200-MB-78	DB	Ring type, series wired, 200A main breaker
	MPAP-200-20GR-78	DB	Ring type, parallel wired, 200A w/ 20A GFCI
	*MPAPD-BLANK-78	DB	Ring type, parallel wired, double, no breakers
	*MPAPD-100-MB-78	DB	Ring type, series wired 100A main breakers, double

* MPAPD units are back to back double power head pedestals.

DB stands for Direct Bury

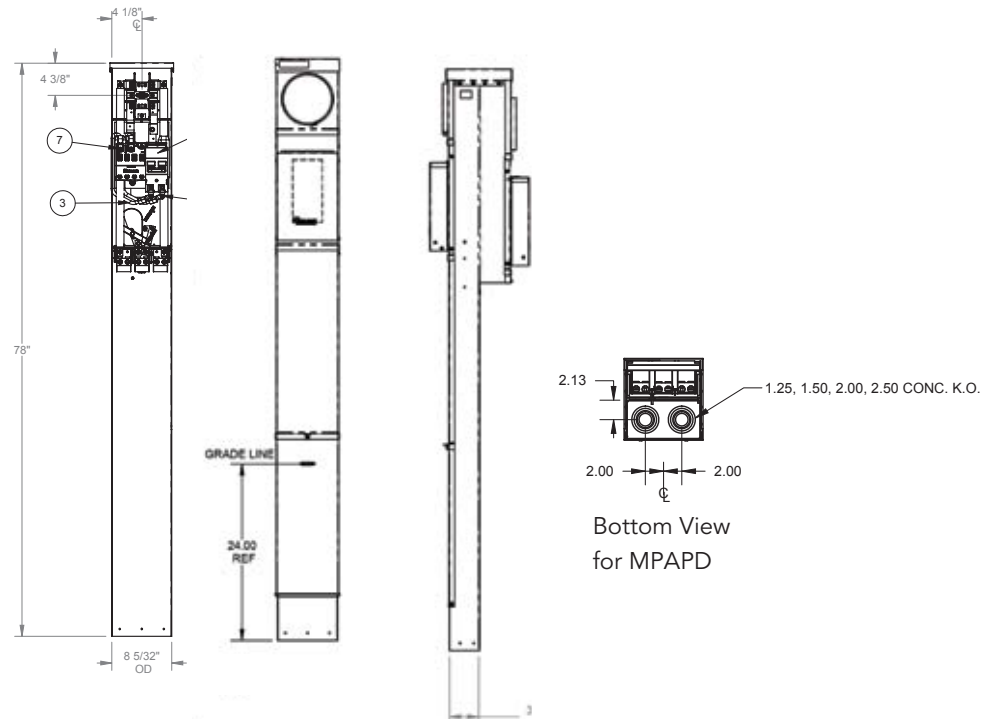
PD stands for Pad Mount

Please consult serving utility for their requirements prior to ordering or installing, as specifications and approvals vary by utility, and may require local electrical inspector approval. All installations must be installed by a licensed electrician and must comply with all national and local codes, laws and regulations. Milbank reserves the right to make changes in specifications and features shown without notice or obligation.



200 Amp Pedestals

200 amp | Mobile Home Metered | 120/240 VAC



MPAP-MPAPD
Direct Bury

Specifications

- UL listed 200A **MPAP**
- Meets **EUSERC** drawing 307
- 120/240 volt single phase service
- Short circuit withstand rating: 10KAIC
- Line bus barrier made of rigid PVC conduit- factory installed
- Single or double power head available
- Direct Bury and Pad Mount available for single and double head pedestals
- Type 3R construction
- Twin line termination lugs #6-350 CU/AL per phase for loop feed wiring
- Furnished with space for four single or two double pole universal style, plug-in circuit breakers in addition to (1) double pole **UQFP** style **Milbank** main breaker
- * **Direct rear feed kit included (nested flat from factory in back cover). Purchase separately as catalog number PF-KR. (For Single Powerhead only)**
- **MR-2** sealing ring standard with ring type cover
- Street light breaker kit available for MPAP, order catalog number **K6299**
- For **MPAP** series wire kit order **K5194**
- Pedestals painted with **ANSI 61 gray powder** coat finish standard. Other colors available, please contact factory.
- **MPAP-Blank-78** can accept (1) Large Frame (UQFP-M) Breaker up to 200A and has a 4 circuit load center that can accept up to either (4) single pole breakers or (2) double pole breakers.
- For field installable receptacles and breakers please contact Milbank



Please consult serving utility for their requirements prior to ordering or installing, as specifications and approvals vary by utility, and may require local electrical inspector approval. All installations must be installed by a licensed electrician and must comply with all national and local codes, laws and regulations. Milbank reserves the right to make changes in specifications and features shown without notice or obligation.