



Milbank Designs Multi-Service Cellular Repeaters in Downtown Area



Downtown Milwaukee has limited space for power distribution.



K6342 installation in downtown Milwaukee.

The Problem

Verizon was looking to add a cellular repeater in downtown Milwaukee. The city needed a small footprint pedestal for power distribution. Anticipating other wireless carriers would be interested in cellular repeaters nearby, the city asked Milbank for a multi-service solution.

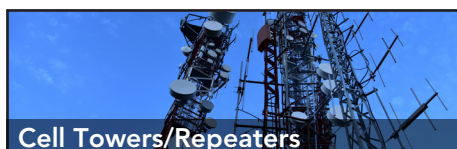
The Solution

Milbank engineers designed a free-standing, multi-position power distribution pedestal, the K6342. Each pedestal has space for four small-frame breakers up to 125 Amps per position. The design was approved by the local utility, We Energies, and pedestals were installed at new cell tower sites across the utility's territory.

K6342 Common Applications



Parks



Cell Towers/Repeaters



Events/Site Power