



Meter Main with Emergency Disconnect

UL Listed | 100-200 Amps

As NEC 2020 starts to be adopted across the country, single position residential meter sockets will need an emergency disconnect. Milbank's U5168 series sockets are compliant with NEC 2020 sections 230.85 emergency disconnect requirement and 230.62 touch safe and could serve as the right solution for your project.

Note: meter mains do not require a load center to be compliant with NEC 2020. Always check with your local utility to see what products are approved in your area. Milbank is working hard on solutions to ensure our products meet NEC 2020 requirements. If you're looking for a product or have questions, contact your local rep.



U5168

Features

- 100-200 Amps
- Extra branch circuits
- Feed-through lugs
- Interlock kits available for generator backup power
 - K5815: Large frame main & small frame generator breaker
- Lever bypass versions available: U5871 and U6012
- Overhead/underground entry and exit
- G90 galvanized steel with powder coat finish
- Single phase
- NEMA 3R enclosure
- UL listed
- Manufactured in the USA

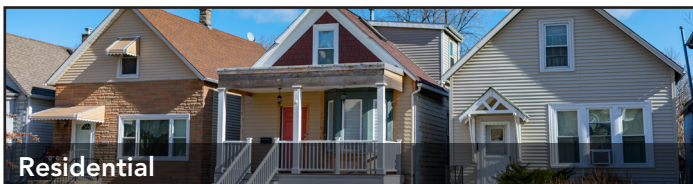


Insulator

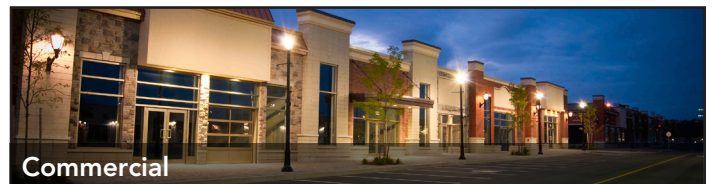


Breaker with insulator in place

The U5168 can be used for both residential and commercial applications.



Residential



Commercial

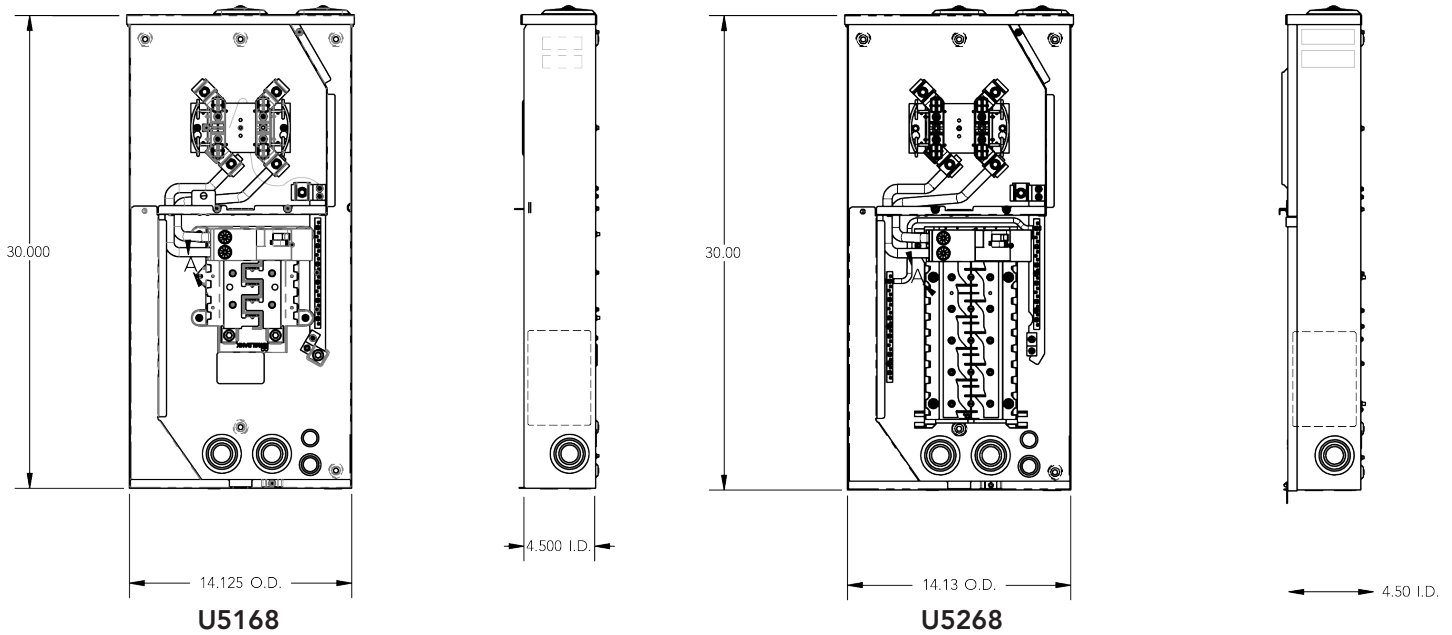
Please consult serving utility for their requirements prior to ordering or installing, as specifications and approvals vary by utility, and may require local electrical inspector approval. All installations must be installed by a licensed electrician and must comply with all national and local codes, laws and regulations. Milbank reserves the right to make changes in specifications and features shown without notice or obligation.





Meter Main with Emergency Disconnect

UL Listed | 100-200 Amps



100-200 Amps | 4 Terminals | Ringless | 1Ø3W

Catalog Number	Circuits	Amps	Service	Hub	Connectors CU/AL - Line	Dimensions			Knockouts					
						D"	W"	H"	1	2	3	4	5	6
U5168-XTL-100	10	100	OH/UG	C.P.	#6-350	4½	14⅞	30	3	2½	2	1	½,¾	¼,½
U5168-XTL-150	8	150	OH/UG	C.P.	#6-350	4½	14⅞	30	3	2½	2	1	½,¾	¼,½
U5168-XTL-200	8	200	OH/UG	C.P.	#6-350	4½	14⅞	30	3	2½	2	1	½,¾	¼,½
U5268-XTL-150	20	150	OH/UG	C.P.	#6-350	4½	14⅞	30	3	2½	2	1	½,¾	¼,½
U5268-XTL-200	20	200	OH/UG	C.P.	#6-350	4½	14⅞	30	3	2½	2	1	½,¾	¼,½

Alliant approved: U5168-XTL-200-KK-ALT | MidAmerican approved: U5168-XTL-200-KK

Notes

- **Bypass:** Horn bypass is available, add suffix -KK to catalog number.
- **Fifth Terminal:** For field-installable fifth terminal, order K5T. For factory-installed, add suffix -5T to catalog number.
- **Interlock Kit:** For generator auxiliary circuit breaker interlock, order K5815 for large QN with small frame Q; order K5820 for large frame QN with large frame QN; order K5830 for small frame Q to small frame Q.
- **Sub Feed Lugs:** #6-350 sub feed lugs provided on 8 and 10 circuit interior. Not available on 20 circuit interior.
- **Service Entry:** Overhead or underground. OH has up to 2½" hub opening and UG has up to 3" knockout.
- **Main Circuit Breaker:** 100 Amps type Q small frame, 150 & 200 Amps type QN large frame. Breakers are not included with interlock kits and must be ordered separately.

*Milbank meter mains accept breakers from multiple manufacturers.
You will not be limited to one brand.*

Please consult serving utility for their requirements prior to ordering or installing, as specifications and approvals vary by utility, and may require local electrical inspector approval. All installations must be installed by a licensed electrician and must comply with all national and local codes, laws and regulations. Milbank reserves the right to make changes in specifications and features shown without notice or obligation.

