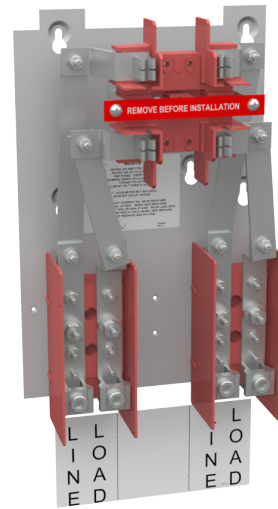




**MILBANK**  
ENERGY AT WORK

## MS-24-TB



Catalog Number	MS-24-TB
Marketing Product Description	200 Ampere 4 Terminal Test Block
UPC	784572160378
Length (IN)	4.531
Width (IN)	10
Height (IN)	20.54
Brand Name	Milbank
Type	Ring Type Meter Socket
Application	Meter Socket
Standard	UL Listed;Type 3R
Voltage Rating	Up to 240 Volts Alternating Current
Amperage Rating	200 Continuous Ampere
Phase	1 Phase
Frequency Rating	60 Hertz
Size	4.531L x 10W x 20.54H
Number Of Cutouts	0
Cutout Size	No Main Breaker
Cable Entry	Block and Bridge Only
Terminal	Single Mechanical
Insulation	Fiberglass with Resin
Mounting	Panel Mount
Enclosure	Block and Bridge Only

Jaw Quantity	4 Terminal
Bypass Type	Link Bypass
Number of Meter Positions	1 Position
Equipment Ground	No Equipment Ground
Hub Opening	No Hub Opening
Line Side Wire Range	1/0 - 250 kcmil
Load Side Wire Range	1/0 - 250 kcmil
Number Of Receptacles	0

Please consult serving utility for their requirements prior to ordering or installing, as specifications and approvals vary by utility and may require local electrical inspector approval. All installations must be installed by a licensed electrician and must comply with all national and local codes, laws and regulations. Milbank reserves the right to make changes in specifications and features shown without notice or obligation.