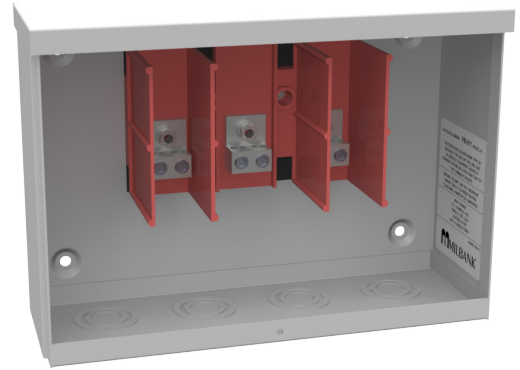




MILBANK
ENERGY AT WORK

PB-011



Catalog Number	PB-011
Marketing Product Description	200 Ampere 1phase 600 Volt 12in-8in-4in Painted Steel Lift Off Screw Front 1 Lug Per Landing - 14-1/0 Wag 1 Lug Per Landing - 14-1/0 Wag 10k Ampere Interrupting Capacity
UPC	784572159914
Length (IN)	4
Width (IN)	12.125
Height (IN)	8.5
Weight (LB)	11
Brand Name	Milbank
Type	Line to Load Distribution
Application	Termination Cabinet
Standard	UL Listed;Type 3R
Number Of Conductors	2
Conductor Material	Copper and Aluminum
Size	4L x 12.125W x 8.5H
Amperage Rating	Up to 100 Ampere
Voltage Rating	Up to 600 Volts Alternating Current
Temperature Rating	No Temperature Rating
Insulation Material	Polypropylene
Jacket Material	No Jacket Material

Color	ANSI 61 Gray
Connection	14 AWG to 1/0 AWG Line Side Lugs and 14 AWG to 1/0 AWG Load Side Lugs
Construction	G90 Galvanized Steel
Finish	Powder Coat Finish
Number of Positions	1 Position
Number of Phases	1
Short Circuit Rating	10000 Ampere

Please consult serving utility for their requirements prior to ordering or installing, as specifications and approvals vary by utility and may require local electrical inspector approval. All installations must be installed by a licensed electrician and must comply with all national and local codes, laws and regulations. Milbank reserves the right to make changes in specifications and features shown without notice or obligation.