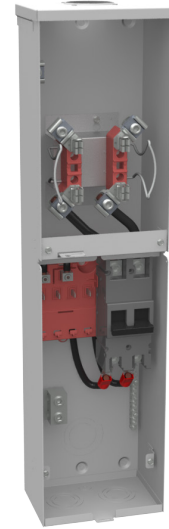




**MILBANK**<sup>®</sup>  
ENERGY AT WORK

## U4422-RL-200



Catalog Number	U4422-RL-200	Mounting	Surface Mount
Marketing Product Description	4 Terminal Ringless Small Hub Open 1-200 Ampere Main Breaker 4 Branch Circuit	Enclosure	G90 Galvanized Steel with Powder Coat Finish
UPC	784572198463	Jaw Quantity	4 Terminal
Length (IN)	5.5	Bypass Type	No Bypass
Width (IN)	8	Number of Meter Positions	1 Position
Height (IN)	32	Equipment Ground	Ground Bar
Brand Name	Milbank	Hub Opening	Small Hub Opening
Type	Ringless Meter Socket	Line Side Wire Range	6 AWG - 350 kcmil
Application	Meter Socket With Main And Load Center	Number Of Receptacles	0
Standard	UL Listed;Type 3R		
Voltage Rating	Up to 240 Volts Alternating Current		
Amperage Rating	200 Continuous Ampere		
Phase	1 Phase		
Frequency Rating	60 Hertz		
Size	5.5L x 8W x 32H		
Number Of Cutouts	1		
Cutout Size	One 200 Ampere Main Breaker		
Cable Entry	Overhead		
Terminal	Lay in		
Insulation	Glass Polyester		

Please consult serving utility for their requirements prior to ordering or installing, as specifications and approvals vary by utility and may require local electrical inspector approval. All installations must be installed by a licensed electrician and must comply with all national and local codes, laws and regulations. Milbank reserves the right to make changes in specifications and features shown without notice or obligation.