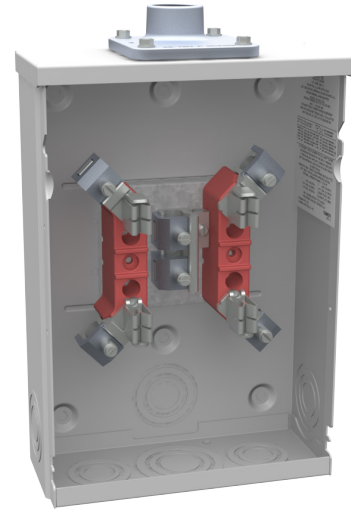




**MILBANK**<sup>®</sup>  
ENERGY AT WORK

## U7490-WL-TG-CE



Catalog Number	U7490-WL-TG-CE	Enclosure	G90 Galvanized Steel with Powder Coat Finish
Marketing Product Description	4 Terminal Ring Type 1 In Hub Triplex Ground Consumers Energy 14-85440	Jaw Quantity	4 Terminal
UPC	784572248373	Bypass Type	No Bypass
Length (IN)	3.313	Number of Meter Positions	1 Position
Width (IN)	8	Equipment Ground	Triplex Ground
Height (IN)	11.5	Hub Opening	1 Inch Hub
Brand Name	Milbank	Line Side Wire Range	6 - 2/0 AWG
Type	Ring Type Meter Socket	Load Side Wire Range	6 - 2/0 AWG
Special Features	Consumers Energy	Number Of Receptacles	0
Application	Meter Socket		
Standard	UL Listed;Type 3R		
Voltage Rating	600 Volts Alternating Current		
Amperage Rating	125 Continuous Ampere		
Phase	1 Phase		
Frequency Rating	60 Hertz		
Size	3.313L x 8W x 11.5H		
Number Of Cutouts	0		
Cutout Size	No Main Breaker		
Cable Entry	Overhead or Underground		
Terminal	Lay in		
Insulation	Glass Polyester		
Mounting	Surface Mount		

Please consult serving utility for their requirements prior to ordering or installing, as specifications and approvals vary by utility and may require local electrical inspector approval. All installations must be installed by a licensed electrician and must comply with all national and local codes, laws and regulations. Milbank reserves the right to make changes in specifications and features shown without notice or obligation.