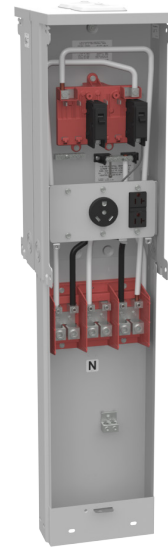




**MILBANK**  
ENERGY AT WORK

## U5230-XL-41



Catalog Number	U5230-XL-41	Terminal	Double Mechanical
Marketing Product Description	Unmetered Small Closing Plate TT30 520GR Double Pedestal Pad Mount	Insulation	Glass Polyester
UPC	784572461734	Mounting	Pedestal
Length (IN)	11.25	Enclosure	G90 Galvanized Steel with Powder Coat Finish
Width (IN)	8.656	Jaw Quantity	4 Terminal
Height (IN)	40.5	Bypass Type	No Bypass
Brand Name	Milbank	Number of Meter Positions	Double Power Head
Type	Unmetered Power Supply	Equipment Ground	2 Barrel Ground Lug and Ground Bar
Special Features	One Single Pole 20 Ampere Breaker and One Single Pole 30 Ampere Breaker	Hub Opening	Small Closing Plate
Application	RV Power	Line Side Wire Range	6 AWG - 350 kcmil
Standard	UL Listed;Type 3R	Number Branch Circuits	6
Voltage Rating	Up to 240 Volts Alternating Current	Number Of Receptacles	4
Amperage Rating	125 Continuous Ampere	Receptacle Configuration	Two NEMA TT30 and Two NEMA 5-20 Ground Fault
Phase	1 Phase		
Frequency Rating	60 Hertz		
Size	11.25L x 8.656W x 40.5H		
Number Of Cutouts	4		
Cutout Size	Two Single Pole 20 Ampere Breakers and Two Single Pole 30 Ampere Breakers		
Cable Entry	Underground		

Please consult serving utility for their requirements prior to ordering or installing, as specifications and approvals vary by utility and may require local electrical inspector approval. All installations must be installed by a licensed electrician and must comply with all national and local codes, laws and regulations. Milbank reserves the right to make changes in specifications and features shown without notice or obligation.