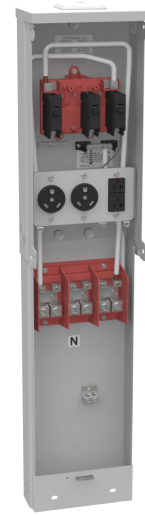




MILBANK[®]
ENERGY AT WORK

U5210-XL-332



Catalog Number	U5210-XL-332	Terminal	Double Mechanical
Marketing Product Description	Unmetered Small Closing Plate TT30 TT30 520GR Single Pedestal Pad Mount	Insulation	Glass Polyester
UPC	784572280007	Mounting	Pedestal
Length (IN)	5.188	Enclosure	G90 Galvanized Steel with Powder Coat Finish
Width (IN)	8.656	Jaw Quantity	0 Terminals
Height (IN)	40.5	Bypass Type	No Bypass
Brand Name	Milbank	Number of Meter Positions	Single Power Head
Type	Unmetered Power Supply	Equipment Ground	2 Barrel Ground Lug and Ground Bar
Special Features	Two Single Pole 30 Ampere Breakers and Single Pole 20 Ampere Breaker	Hub Opening	Small Closing Plate
Application	RV Power	Line Side Wire Range	6 AWG - 350 kcmil
Standard	UL Listed;Type 3R	Number Branch Circuits	3
Voltage Rating	Up to 240 Volts Alternating Current	Number Of Receptacles	3
Amperage Rating	125 Continuous Ampere	Receptacle Configuration	Two NEMA TT30 and One NEMA 5-20 Ground Fault
Phase	1 Phase		
Frequency Rating	60 Hertz		
Size	5.188L x 8.656W x 40.5H		
Number Of Cutouts	3		
Cutout Size	Two Single Pole 30 Ampere Breakers and One Single Pole 20 Ampere Breaker		
Cable Entry	Underground		

Please consult serving utility for their requirements prior to ordering or installing, as specifications and approvals vary by utility and may require local electrical inspector approval. All installations must be installed by a licensed electrician and must comply with all national and local codes, laws and regulations. Milbank reserves the right to make changes in specifications and features shown without notice or obligation.