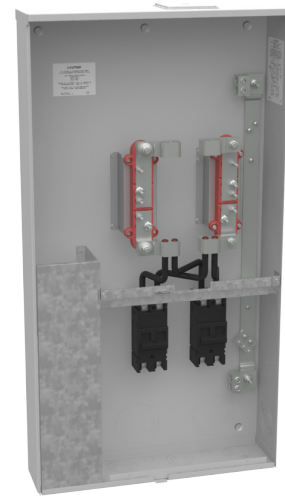




MILBANK
ENERGY AT WORK

U5067-X-2/200



Catalog Number	U5067-X-2/200	Mounting	Surface Mount
Marketing Product Description	4 Terminal Bolt-in Large Closing Plate Link Bypass 2-double Connector 6-350 2-200 Ampere Main Breaker	Enclosure	G90 Galvanized Steel with Powder Coat Finish
UPC	784572317147	Jaw Quantity	4 Terminal
Length (IN)	6	Bypass Type	Link Bypass
Width (IN)	24	Number of Meter Positions	1 Position
Height (IN)	45	Equipment Ground	3 Barrel Ground Lug
Brand Name	Milbank	Hub Opening	Large Closing Plate
Type	Bolt On Meter Socket	Line Side Wire Range	Two 6 AWG - 350 kcmil
Application	Meter Socket With Main	Load Side Wire Range	1 AWG - 300 kcmil
Standard	UL Listed;Type 3R	Number Of Receptacles	0
Voltage Rating	240 Volts Alternating Current		
Amperage Rating	480 Continuous Ampere		
Phase	1 Phase		
Frequency Rating	60 Hertz		
Size	6L x 24W x 45H		
Number Of Cutouts	2		
Cutout Size	Two 200 Ampere Main Breakers		
Cable Entry	Overhead or Underground		
Terminal	1/2 Inch Stud Line Side		
Insulation	Glass Polyester		

Please consult serving utility for their requirements prior to ordering or installing, as specifications and approvals vary by utility and may require local electrical inspector approval. All installations must be installed by a licensed electrician and must comply with all national and local codes, laws and regulations. Milbank reserves the right to make changes in specifications and features shown without notice or obligation.