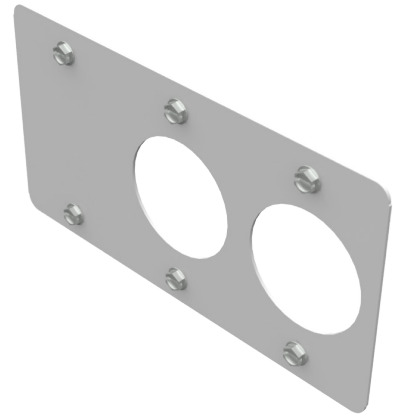




MILBANK[®]
ENERGY AT WORK

K5920-58



| | |
|-------------------------------|---|
| Catalog Number | K5920-58 |
| Marketing Product Description | Receptacle Face Plate Millennium Blank 1450 TT30 |
| UPC | 784572595675 |
| Length (IN) | 0.58 |
| Width (IN) | 8 |
| Height (IN) | 4.25 |
| Weight (LB) | 1 |
| Brand Name | Milbank |
| Type | Receptacle Cover Plate |
| Special Features | One NEMA 14-50 and One NEMA TT30 Receptacle |
| Application | Metering Accessory |
| Material | G90 Galvanized Steel |
| Finish | Powder Coat Finish |
| Shape | Rectangle |
| Size | 0.58L x 8W x 4.25H |
| Number Of Outlet | 2 |
| Color | ANSI 61 Gray |
| Construction | Sheared |
| Mounting | Three Position Bridge Mount |
| NEMA Rating | No Rating |

Please consult serving utility for their requirements prior to ordering or installing, as specifications and approvals vary by utility and may require local electrical inspector approval. All installations must be installed by a licensed electrician and must comply with all national and local codes, laws and regulations. Milbank reserves the right to make changes in specifications and features shown without notice or obligation.