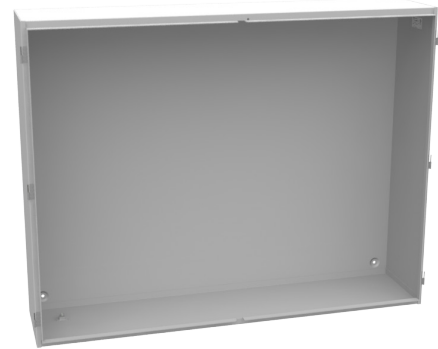




MILBANK[®]
ENERGY AT WORK

425412-CTC1-SP



Catalog Number	425412-CTC1-SP
Marketing Product Description	54X12x42 Hinge Cover Type 1 UL Listed Steel No Knockouts ANSI 61 Gray Double Doors Lift Off Hinges Wing Nut With Door Hole For Latching
UPC	784572677821
Length (IN)	12
Width (IN)	54
Height (IN)	42
Weight (LB)	162
Brand Name	Milbank
Type	Hinge Cover
Application	Enclosure for Mounting Electrical Equipment
Standard	UL Listed
Number Of Outlet	0
Material	Steel with Powder Coat Finish
Size	12L x 54W x 42H
Color	ANSI 61 Gray
Construction	Welded
Cable Entry	No Knockouts
Mounting	Wall Mount
NEMA Rating	Type 1
Hinge Type	Lift Off Hinges

Top	Plain Top
Door	2 Doors
Latch	Wing Nuts for Latching
Support	No Center Post

Please consult serving utility for their requirements prior to ordering or installing, as specifications and approvals vary by utility and may require local electrical inspector approval. All installations must be installed by a licensed electrician and must comply with all national and local codes, laws and regulations. Milbank reserves the right to make changes in specifications and features shown without notice or obligation.